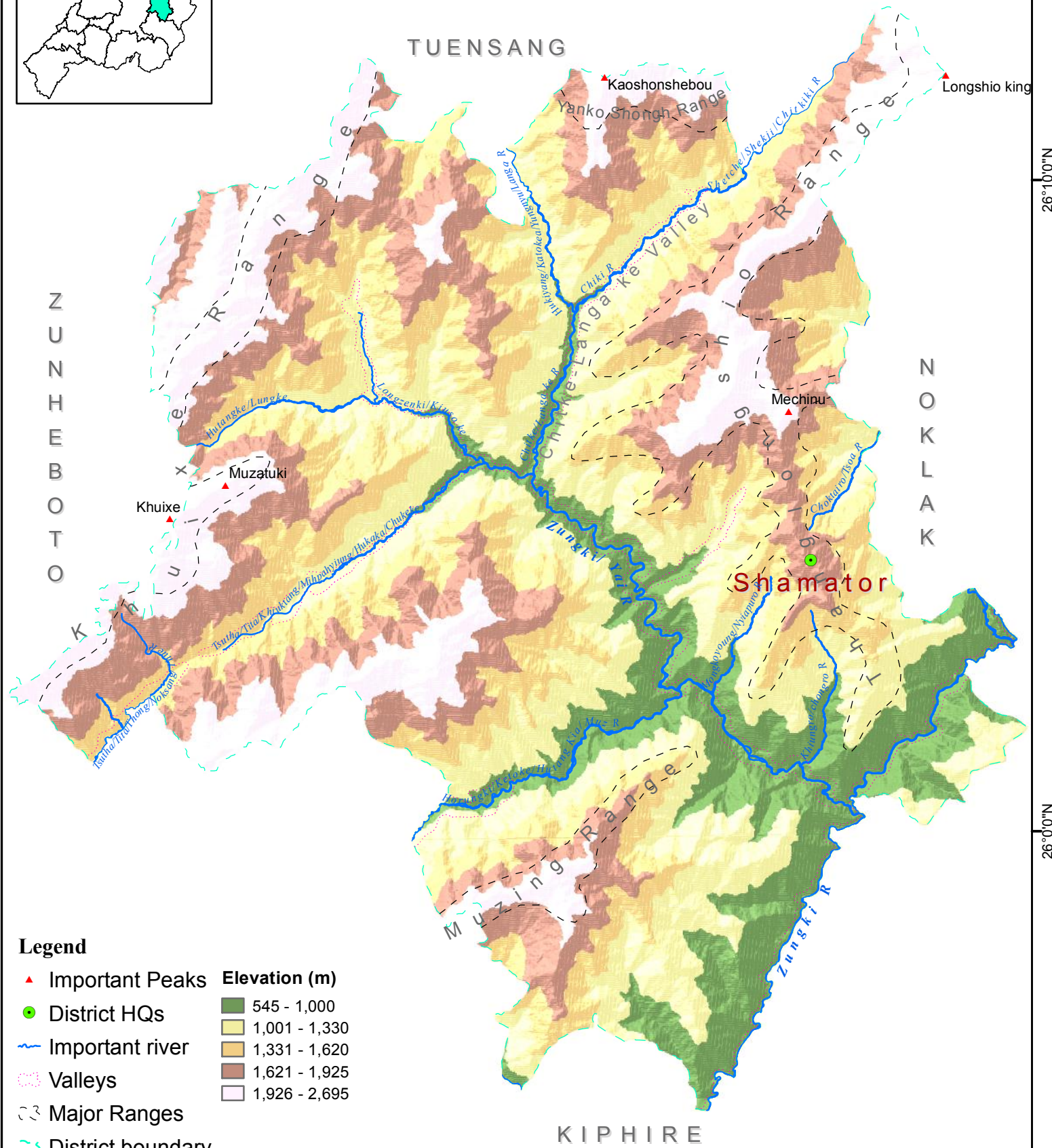
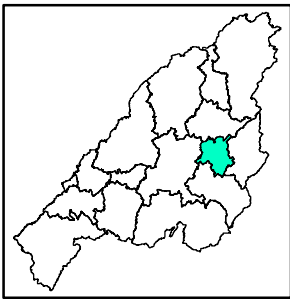
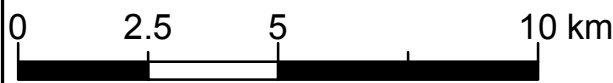


# PHYSICAL MAP SHAMATOR DISTRICT, NAGALAND



### Legend

- ▲ Important Peaks
  - District HQs
  - Important river
  - ⋯ Valleys
  - - - Major Ranges
  - ⋯ District boundary
- | Elevation (m) |               |
|---------------|---------------|
|               | 545 - 1,000   |
|               | 1,001 - 1,330 |
|               | 1,331 - 1,620 |
|               | 1,621 - 1,925 |
|               | 1,926 - 2,695 |



Dataset: NGISRSC geospatial base layers (2022), Village Resource Mapping, SRTM (DEM).  
Coordinate System: WGS 1984 UTM Zone 46N

Prepared by: Nagaland GIS & Remote Sensing Centre  
Planning & Co-ordination Department, Govt. of Nagaland



94°40'0"E

94°50'0"E

26°10'0"N

26°0'0"N