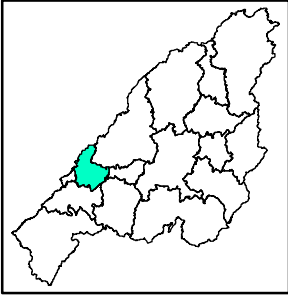
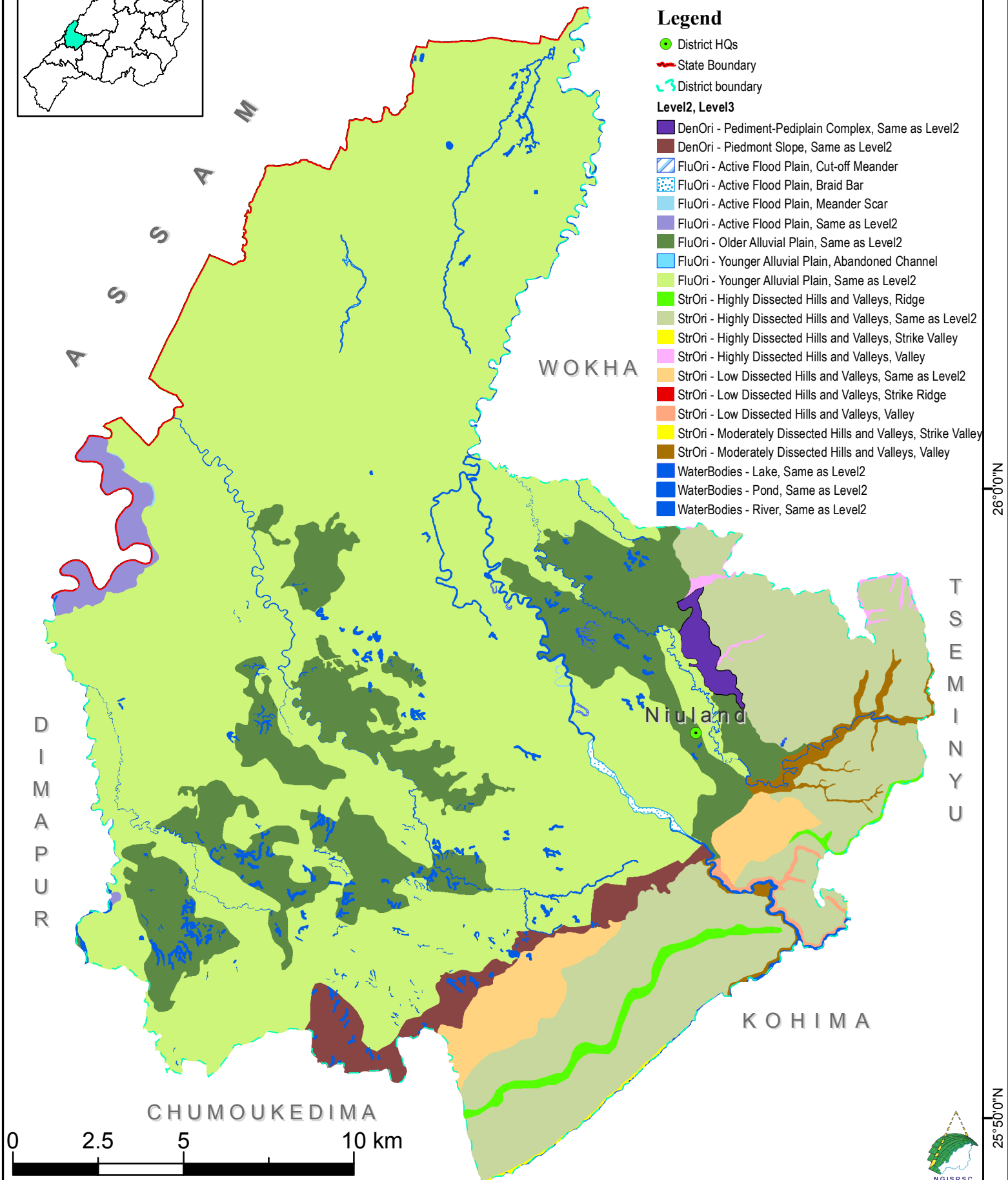


GEOMORPHOLOGY MAP NIULAND DISTRICT, NAGALAND



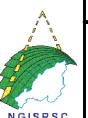
Legend

- District HQs
- State Boundary
- District boundary
- Level2, Level3**
- DenOri - Pediment-Pediplain Complex, Same as Level2
- DenOri - Piedmont Slope, Same as Level2
- FluOri - Active Flood Plain, Cut-off Meander
- FluOri - Active Flood Plain, Braid Bar
- FluOri - Active Flood Plain, Meander Scar
- FluOri - Active Flood Plain, Same as Level2
- FluOri - Older Alluvial Plain, Same as Level2
- FluOri - Younger Alluvial Plain, Abandoned Channel
- FluOri - Younger Alluvial Plain, Same as Level2
- StrOri - Highly Dissected Hills and Valleys, Ridge
- StrOri - Highly Dissected Hills and Valleys, Same as Level2
- StrOri - Highly Dissected Hills and Valleys, Strike Valley
- StrOri - Highly Dissected Hills and Valleys, Valley
- StrOri - Low Dissected Hills and Valleys, Same as Level2
- StrOri - Low Dissected Hills and Valleys, Strike Ridge
- StrOri - Low Dissected Hills and Valleys, Valley
- StrOri - Moderately Dissected Hills and Valleys, Strike Valley
- StrOri - Moderately Dissected Hills and Valleys, Valley
- WaterBodies - Lake, Same as Level2
- WaterBodies - Pond, Same as Level2
- WaterBodies - River, Same as Level2



Dataset: NGISRSC base layers (2022), LISS-III-2006
 National Geomorphology & Lineament Mapping-1:50K
 Coordinate System: WGS 1984 UTM Zone 46N

Prepared by: Nagaland GIS & Remote Sensing Centre
 Planning & Co-ordination Department, Govt. of Nagaland



93°50'0"E 94°0'0"E

"The boundaries of Nagaland as shown on this map are subject to revision as provided in the 1960 Delhi Agreement"

"This map is without prejudice to the claims of Nagaland for re-drawing the Assam-Nagaland boundary on the basis of historical and traditional factor"