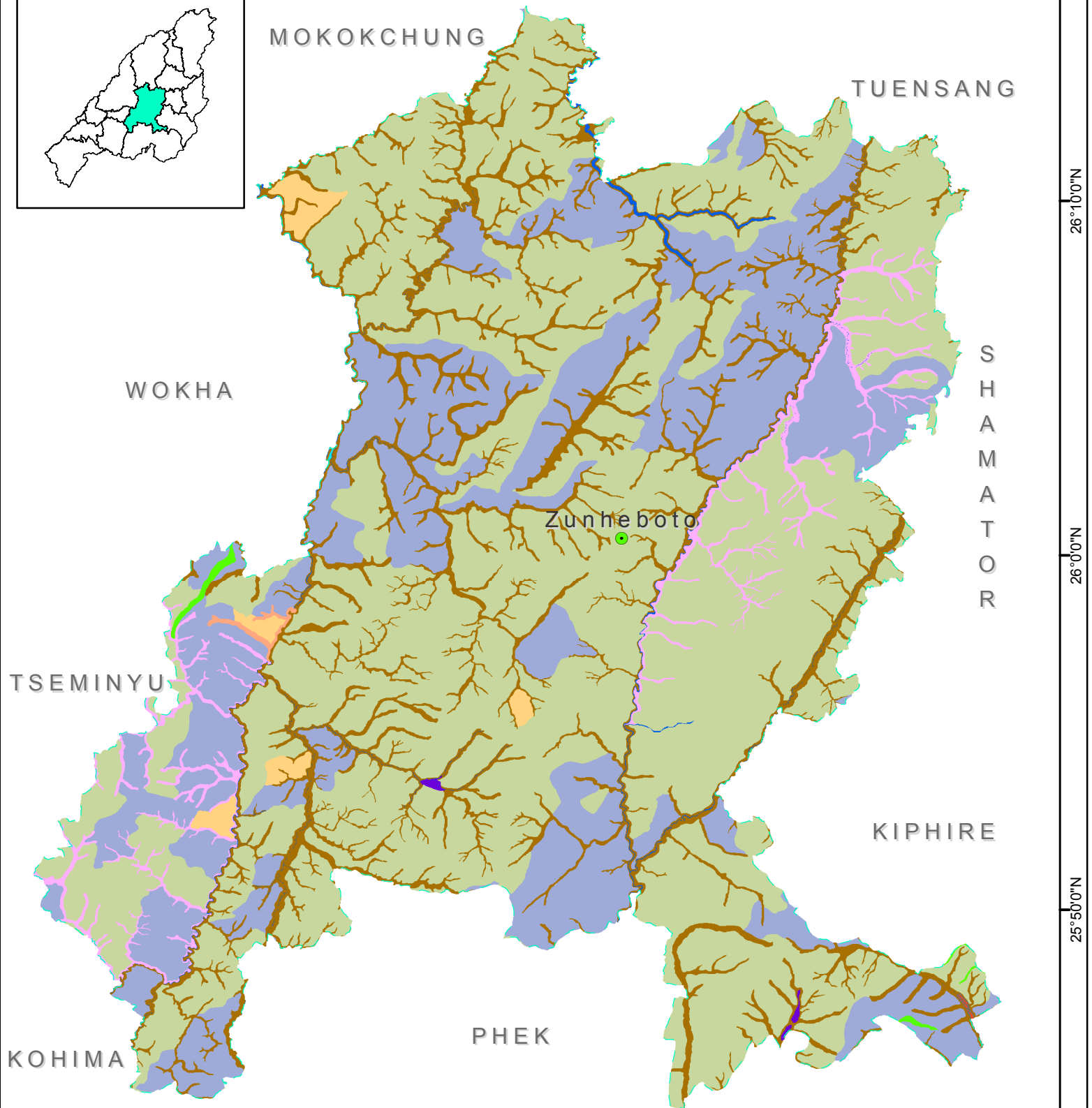
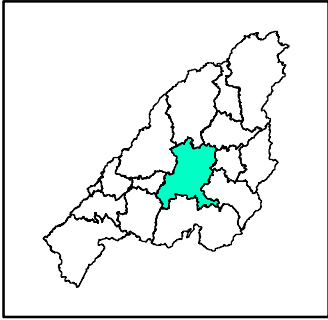


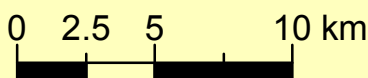
# GEOMORPHOLOGY MAP ZUNHEBOTO DISTRICT, NAGALAND



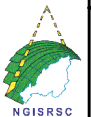
### Legend

- District HQs
- ⋈ District boundary
- Level2, Level3**
- FluOri - Younger Alluvial Plain, Terrace
- StrOri - Highly Dissected Hills and Valleys, Same as Level2
- StrOri - Highly Dissected Hills and Valleys, Valley
- StrOri - Low Dissected Hills and Valleys, Same as Level2
- StrOri - Low Dissected Hills and Valleys, Valley
- StrOri - Moderately Dissected Hills and Valleys, Hill
- StrOri - Moderately Dissected Hills and Valleys, Ridge
- StrOri - Moderately Dissected Hills and Valleys, Same as Level2
- StrOri - Moderately Dissected Hills and Valleys, Strath Terrace
- StrOri - Moderately Dissected Hills and Valleys, Valley
- WaterBodies - Others, Same as Level2
- WaterBodies - River, Same as Level2

Dataset: NGISRSC base layers (2022), LISS-III-2006  
National Geomorphology & Lineament Mapping-1:50K  
Coordinate System: WGS 1984 UTM Zone 46N



Prepared by: Nagaland GIS & Remote Sensing Centre  
Planning & Co-ordination Department, Govt. of Nagaland



94°20'0"E

94°30'0"E

94°40'0"E

26°10'0"N

26°0'0"N

25°50'0"N

25°40'0"N