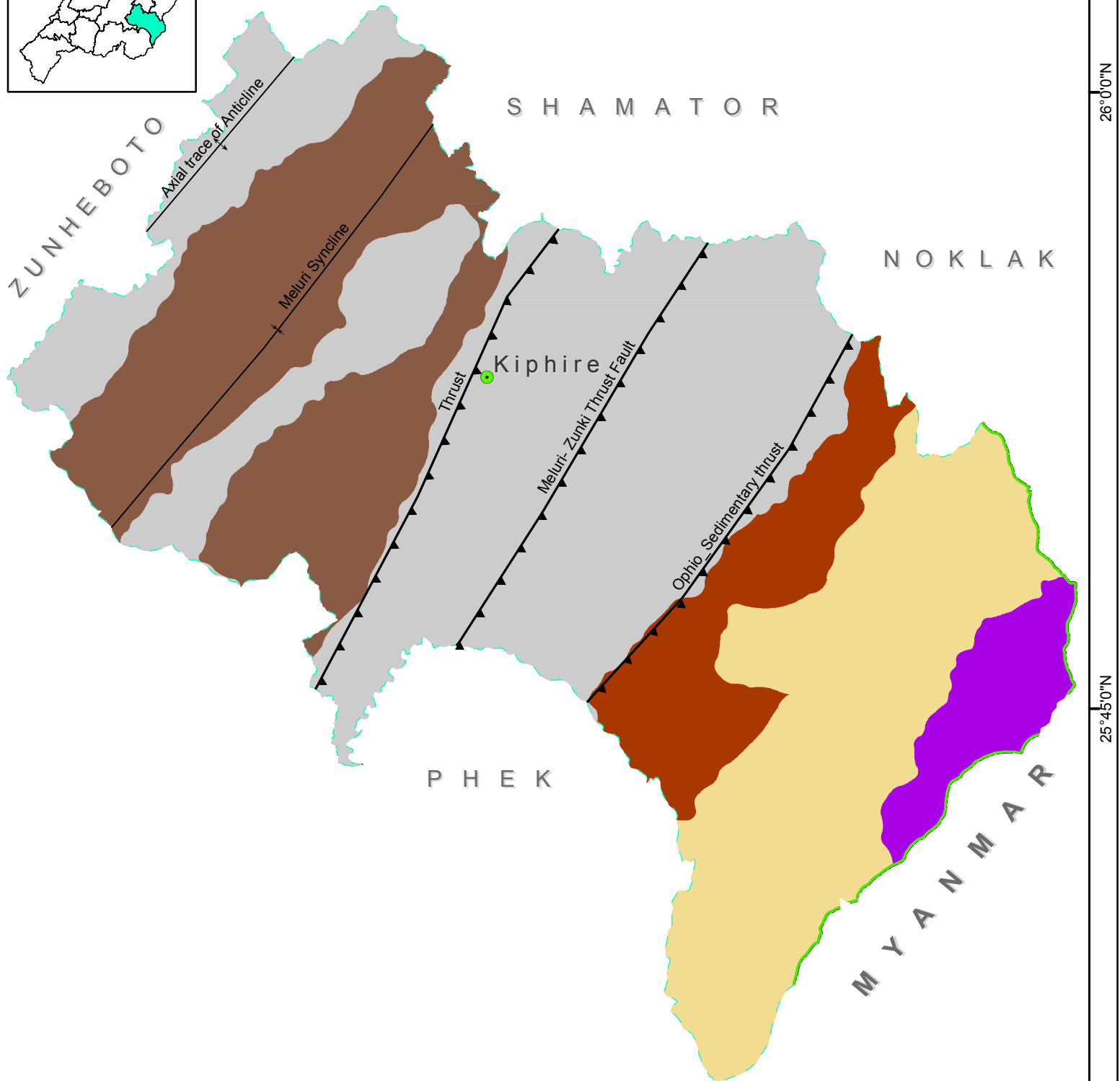
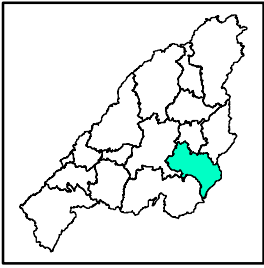
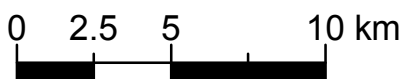


GEOLOGICAL MAP KIPHIRE DISTRICT, NAGALAND



Legend

- | | | | | |
|------------------------|----------------------------------|----------------|-------------------|--------------------------|
| District HQs | Litho-Stratigraphic Units | Barail Group | Naga Ophiolites | Thrust |
| District boundary | Disang Group | Nimi Formation | Naga Metamorphics | Axial trace of Anticline |
| International boundary | | | | Axial trace of Syncline |



Dataset: NGISRSC base layers (2022), Geological map (GSI, 2011)
Coordinate System: WGS 1984 UTM Zone 46N

Prepared by: Nagaland GIS & Remote Sensing Centre
Planning & Co-ordination Department, Govt. of Nagaland



94°45'0"E 95°0'0"E
"The boundaries of Nagaland as shown on this map are subject to revision as provided in the 1960 Delhi Agreement"

26°0'0"N

25°45'0"N

25°30'0"N