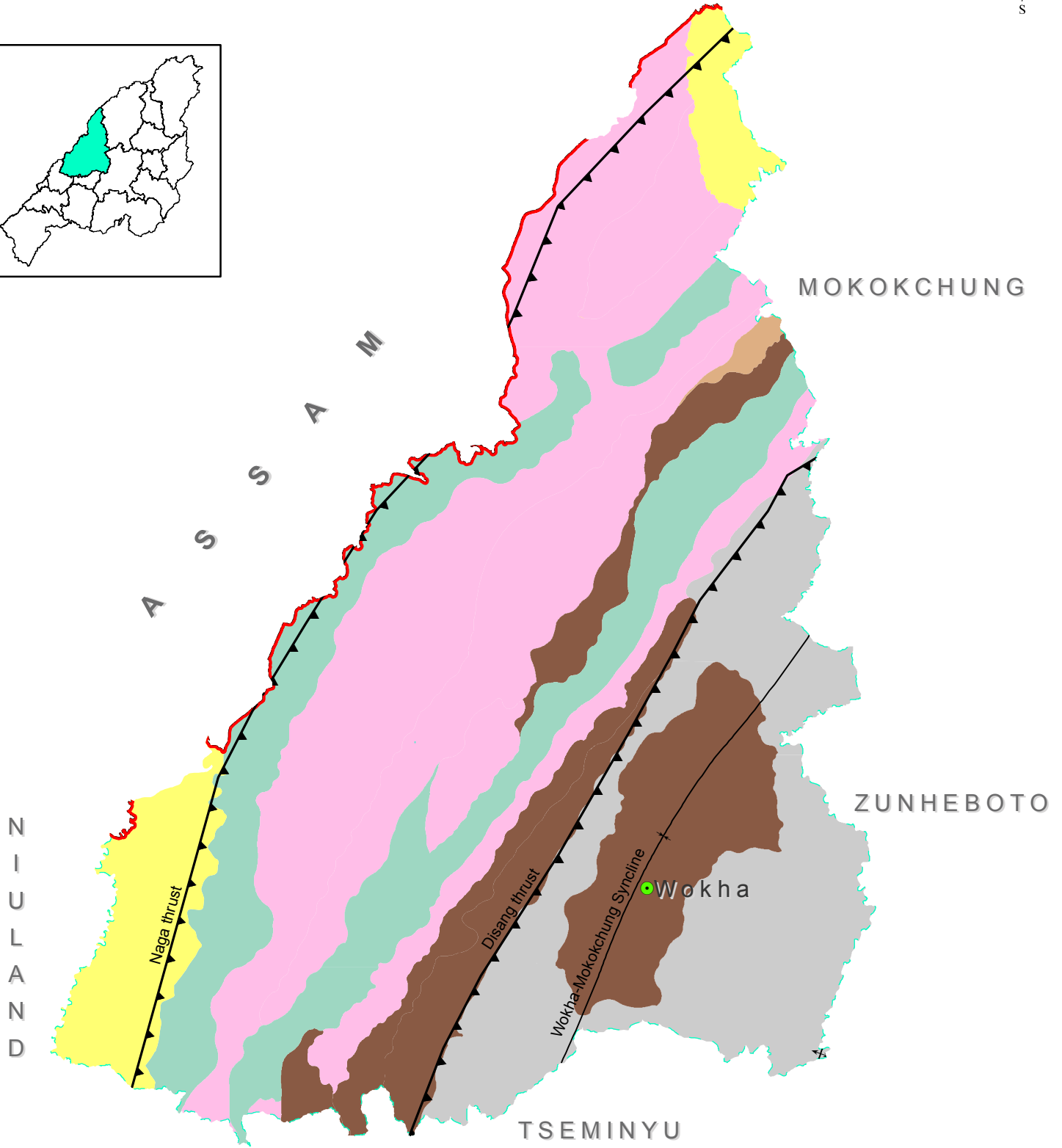
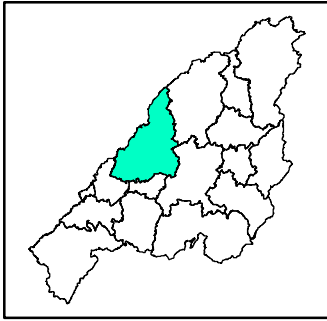
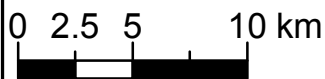


# GEOLOGICAL MAP WOKHA DISTRICT, NAGALAND



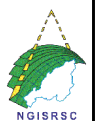
## Legend

- |                         |                                  |              |                             |
|-------------------------|----------------------------------|--------------|-----------------------------|
| ● District HQs          | <b>Litho-Stratigraphic Units</b> | Surma Group  | ↙ Thrust                    |
| - - - District boundary | Quaternary Group                 | Barail Group | — — Axial trace of Syncline |
| — State boundary        | Dihing Group                     | Disang Group |                             |
|                         | Tipam Group                      |              |                             |



Dataset: NGISRSC base layers (2022), Geological map (GSI,2011)  
Coordinate System: WGS 1984 UTM Zone 46N

Prepared by: Nagaland GIS & Remote Sensing Centre  
Planning & Co-ordination Department, Govt. of Nagaland



94°0'0"E

94°20'0"E

"The boundaries of Nagaland as shown on this map are subject to revision as provided in the 1960 Delhi Agreement"

"This map is without prejudice to the claims of Nagaland for re-drawing the Assam-Nagaland boundary on the basis of historical and traditional factor"