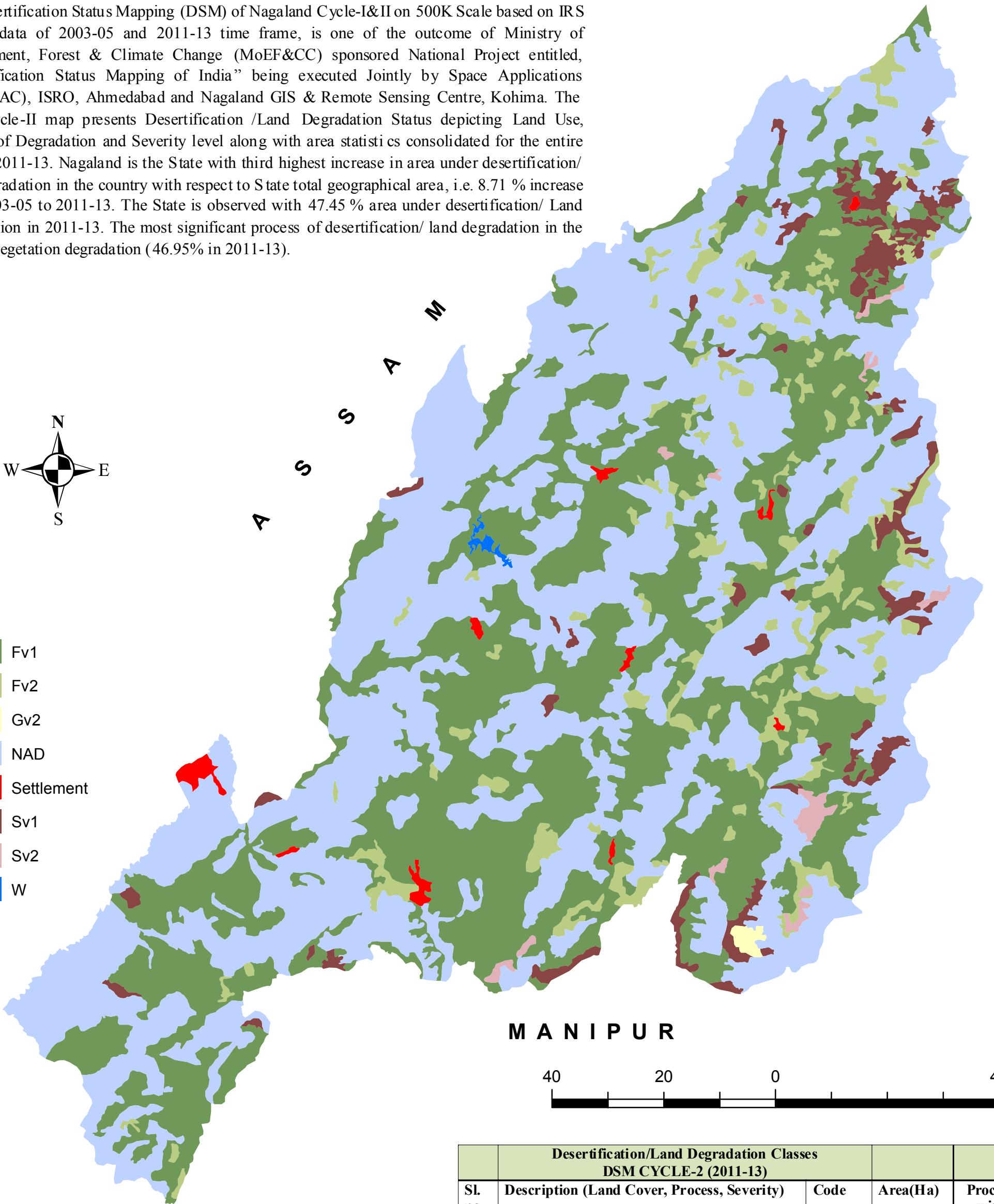
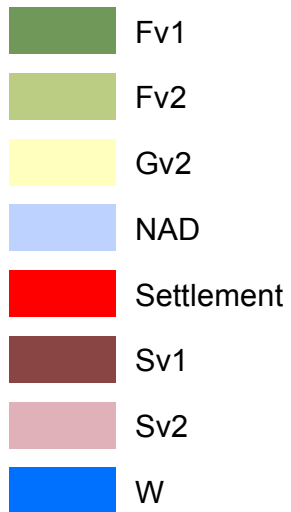
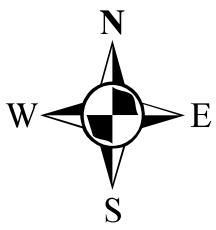


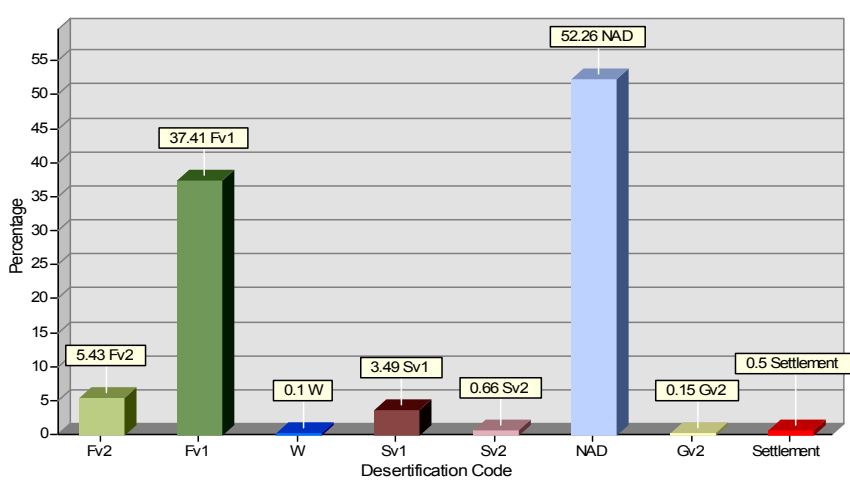
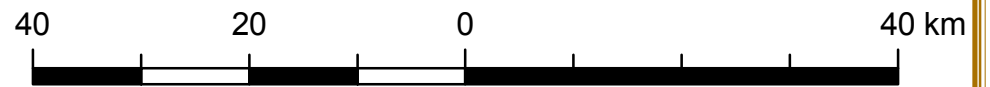
DESERTIFICATION STATUS MAPPING OF NAGALAND CYCLE- 2

ARUNACHAL
PRADESH

The Desertification Status Mapping (DSM) of Nagaland Cycle-I&II on 500K Scale based on IRS AWiFS data of 2003-05 and 2011-13 time frame, is one of the outcome of Ministry of Environment, Forest & Climate Change (MoEF&CC) sponsored National Project entitled, "Desertification Status Mapping of India" being executed Jointly by Space Applications Centre(SAC), ISRO, Ahmedabad and Nagaland GIS & Remote Sensing Centre, Kohima. The DSM cycle-II map presents Desertification /Land Degradation Status depicting Land Use, Process of Degradation and Severity level along with area statistics consolidated for the entire state in 2011-13. Nagaland is the State with third highest increase in area under desertification/land degradation in the country with respect to State total geographical area, i.e. 8.71 % increase from 2003-05 to 2011-13. The State is observed with 47.45 % area under desertification/ Land Degradation in 2011-13. The most significant process of desertification/ land degradation in the State is vegetation degradation (46.95% in 2011-13).



M A N I P U R



| Desertification/Land Degradation Classes DSM CYCLE-2 (2011-13) | | | | |
|---|--|------|----------------|-----------------------|
| Sl. no | Description (Land Cover, Process, Severity) | Code | Area(Ha) | Process wise Area(Ha) |
| 1 | Forest/Plantation, Vegetal Degradation, Low | Fv1 | 621356 | |
| 2 | Forest/Plantation, Vegetal Degradation, High | Fv2 | 86615 | 707971 |
| 3 | Grassland, vegetation degradation, High | Gv2 | 2459 | 2459 |
| 4 | Scrub, Vegetal Degradation, Low | SV1 | 57047 | |
| 5 | Scrub, Vegetal Degradation, High | SV2 | 10943 | 67990 |
| 6 | No Apparent Degradation | NAD | 869562 | |
| 7 | Waterbody/drainage | W | 1659 | |
| 8 | Settlement | S | 8257 | 8257 |
| Total Geographical Area | | | 1657900 | |
| Total area under Desertification/Land Degradation units | | | | 786677 |
| % of TGA | | | | 47.45 |