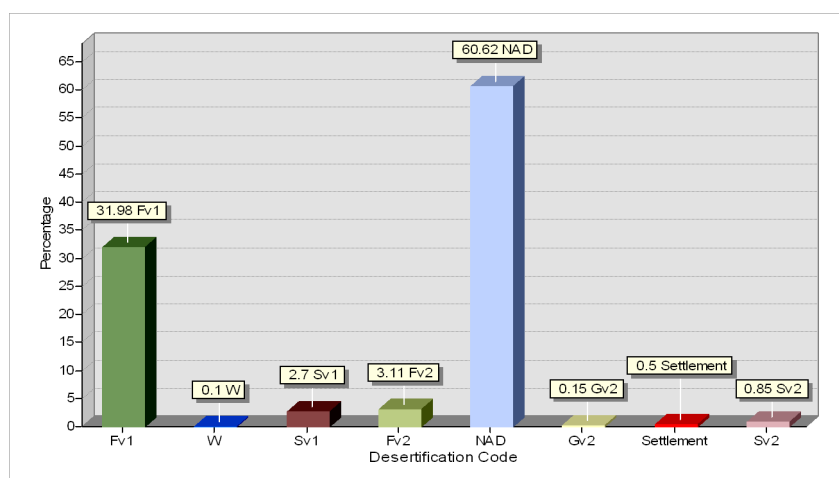
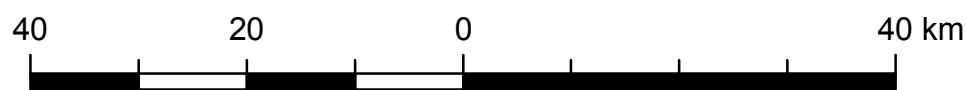
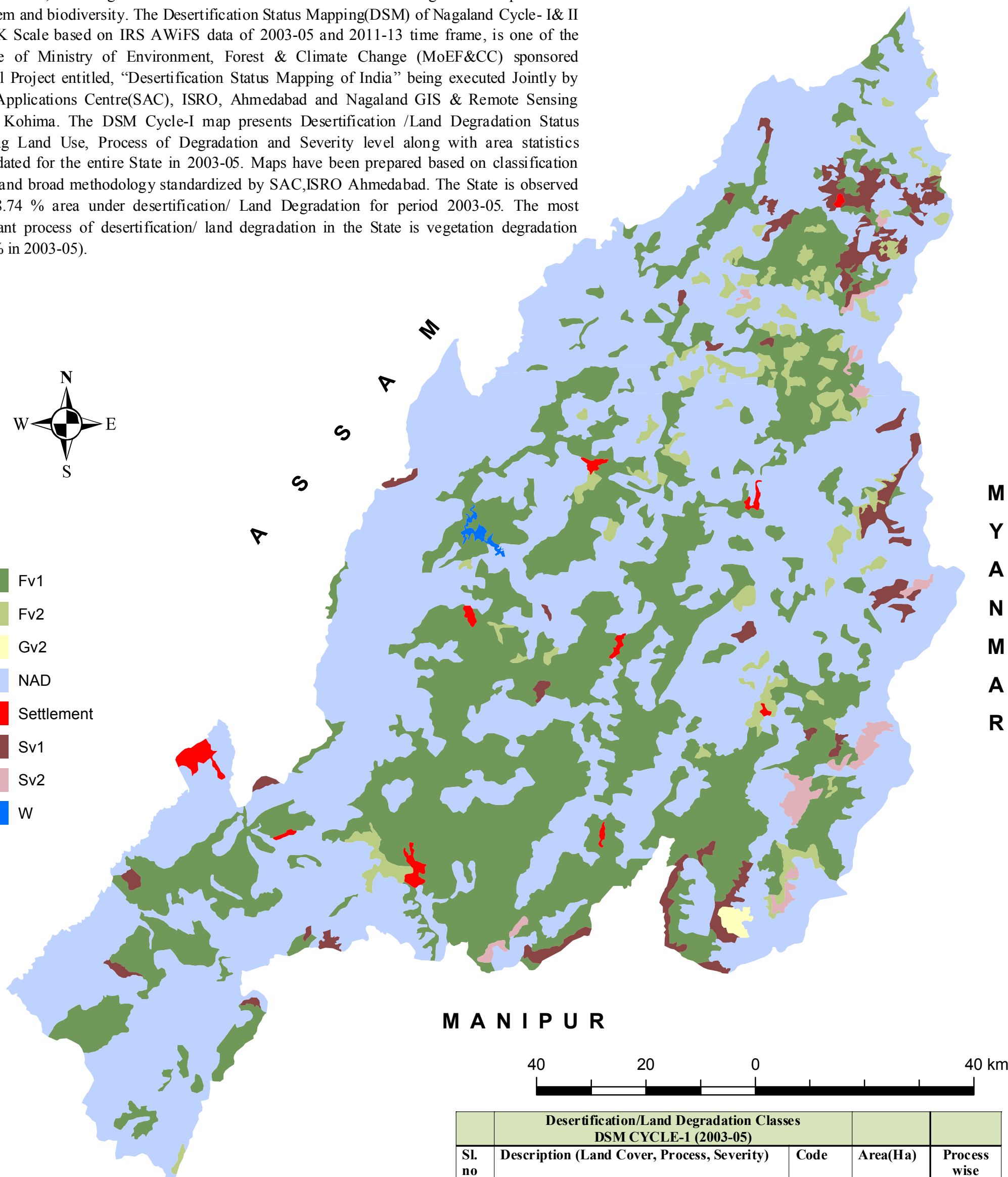
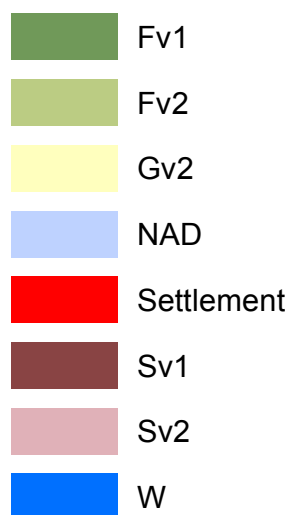
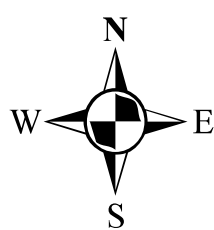


DESERTIFICATION STATUS MAPPING OF NAGALAND CYCLE- 1.

ARUNACHAL
PRADESH

Desertification is Land degradation in arid, semi-arid and dry sub humid areas resulting from various factors, including climatic variations and human activities leading to loss of productive ecosystem and biodiversity. The Desertification Status Mapping(DSM) of Nagaland Cycle- I& II on 500K Scale based on IRS AWiFS data of 2003-05 and 2011-13 time frame, is one of the outcome of Ministry of Environment, Forest & Climate Change (MoEF&CC) sponsored National Project entitled, "Desertification Status Mapping of India" being executed Jointly by Space Applications Centre(SAC), ISRO, Ahmedabad and Nagaland GIS & Remote Sensing Centre, Kohima. The DSM Cycle-I map presents Desertification /Land Degradation Status depicting Land Use, Process of Degradation and Severity level along with area statistics consolidated for the entire State in 2003-05. Maps have been prepared based on classification system and broad methodology standardized by SAC,ISRO Ahmedabad. The State is observed with 38.74 % area under desertification/ Land Degradation for period 2003-05. The most significant process of desertification/ land degradation in the State is vegetation degradation (38.48% in 2003-05).



Desertification/Land Degradation Classes DSM CYCLE-1 (2003-05)				
Sl. no	Description (Land Cover, Process, Severity)	Code	Area(Ha)	Process wise Area(Ha)
1	Forest/Plantation,Vegetal Degradation, Low	Fv1	527757	
2	Forest/Plantation,Vegetal Degradation, High	Fv2	51178	578935
3	Grassland, vegetation degradation, High	Gv2	2459	2459
4	Scrub, Vegetal Degradation, Low	SV1	42503	
5	Scrub, Vegetal Degradation, High	SV2	14059	56562
6	No Apparent Degradation	NAD	1013937	
7	Waterbody/drainage	W	1659	
8	Settlement	S	4347	4347
Total Geographical Area			1657900	
Total area under Desertification/Land Degradation units				642303
% of TGA			38.74	