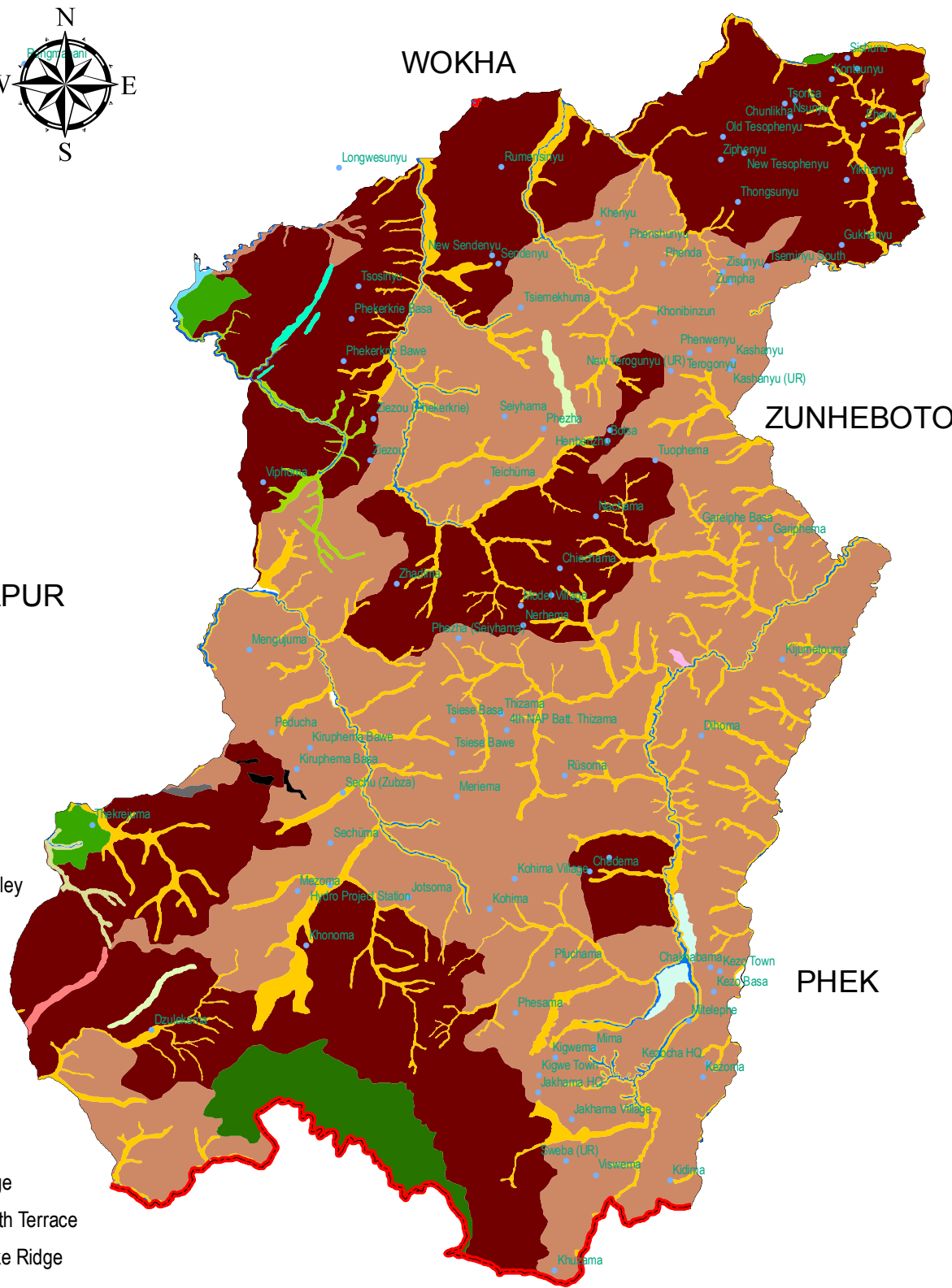


DIMAPUR

Legend

- Village
- DenOri - Moderately Dissected Hills and Valleys, Valley
- DenOri - Highly Dissected Hills and Valleys
- DenOri - Mass Wasting Products, Landslide
- FluOri - Older Alluvial Plain
- StrOri - Low Dissected Hills and Valleys
- StrOri - Low Dissected Hills and Valleys, Scarp
- StrOri - Low Dissected Hills and Valleys, Valley
- StrOri - Moderately Dissected Hills and Valleys
- StrOri - Moderately Dissected Hills and Valleys, Ridge
- StrOri - Moderately Dissected Hills and Valleys, Strath Terrace
- StrOri - Moderately Dissected Hills and Valleys, Strike Ridge
- StrOri - Moderately Dissected Hills and Valleys, Valley
- StrOri - Highly Dissected Hills and Valleys
- StrOri - Highly Dissected Hills and Valleys, Ridge
- StrOri - Highly Dissected Hills and Valleys, Scarp
- StrOri - Highly Dissected Hills and Valleys, Valley
- WaterBodies - River
- District boundary
- State boundary

P
E
R
E
N



MANIPUR



(After NGISRSC)

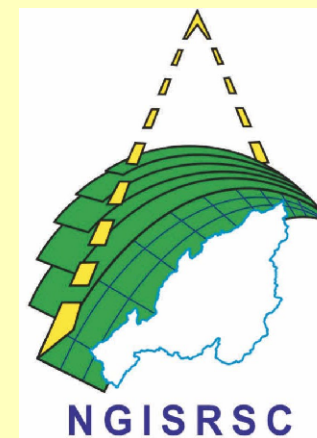
93°50'0"E

94°00'E

94°10'0"E

26°00'N
25°50'N
25°40'N
25°30'N

GEOMORPHOLOGY KOHIMA DISTRICT NAGALAND



PREPARED BY
Nagaland GIS and Remote Sensing Centre
Planning & Co-ordination Department
Government of Nagaland

"The boundaries of Nagaland as shown on this map are subject to revision as provided in the 1960 Delhi Agreement"