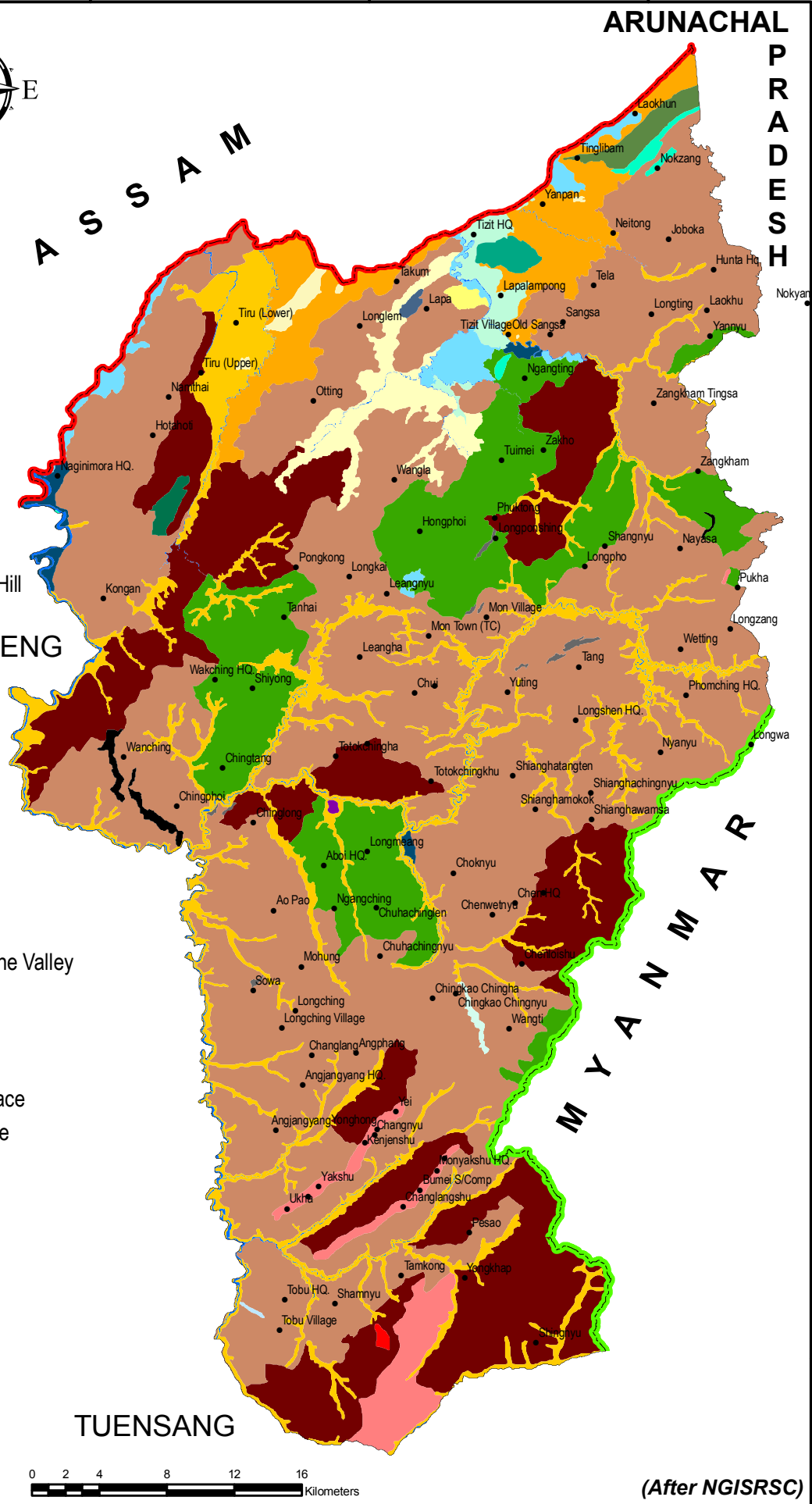
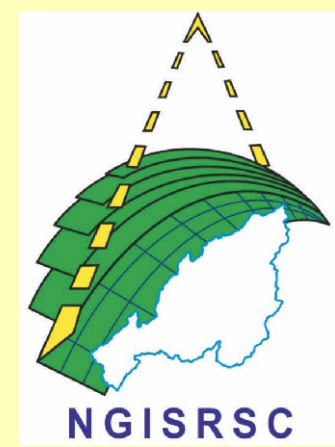


Legend

- Village
- DenOri - Moderately Dissected Hills and Valleys, Residual Hill
- DenOri - Pediment-Pediplain Complex, Pediment
- FluOri - Younger Alluvial Plain
- FluOri - Younger Alluvial Plain, Terrace
- FluOri - Older Alluvial Plain
- FluOri - Older Alluvial Plain, Terrace
- StrOri - Low Dissected Hills and Valleys
- StrOri - Moderately Dissected Hills and Valleys
- StrOri - Moderately Dissected Hills and Valleys, Cuesta
- StrOri - Moderately Dissected Hills and Valleys, Hill
- StrOri - Moderately Dissected Hills and Valleys, Hogback
- StrOri - Moderately Dissected Hills and Valleys, Intermontane Valley
- StrOri - Moderately Dissected Hills and Valleys, Monocline
- StrOri - Moderately Dissected Hills and Valleys, Ridge
- StrOri - Moderately Dissected Hills and Valleys, Scarp
- StrOri - Moderately Dissected Hills and Valleys, Strath Terrace
- StrOri - Moderately Dissected Hills and Valleys, Strike Ridge
- StrOri - Moderately Dissected Hills and Valleys, Valley
- StrOri - Highly Dissected Hills and Valleys
- StrOri - Highly Dissected Hills and Valleys, Cuesta
- StrOri - Highly Dissected Hills and Valleys, Ridge
- StrOri - Highly Dissected Hills and Valleys, Scarp
- StrOri - Highly Dissected Hills and Valleys, Valley
- WaterBodies - River
- District boundary
- State boundary
- International boundary



GEOMORPHOLOGY MON DISTRICT NAGALAND



PREPARED BY
Nagaland GIS and Remote Sensing Centre
Planning & Co-ordination Department
Government of Nagaland

94°30'0"E 94°40'0"E 94°50'0"E 95°00'0"E 95°10'0"E

"The boundaries of Nagaland as shown on this map are subject to revision as provided in the 1960 Delhi Agreement"
"This map is without prejudice to the claims of Nagaland for re-drawing the Assam-Nagaland boundary on the basis of historical and traditional factor"