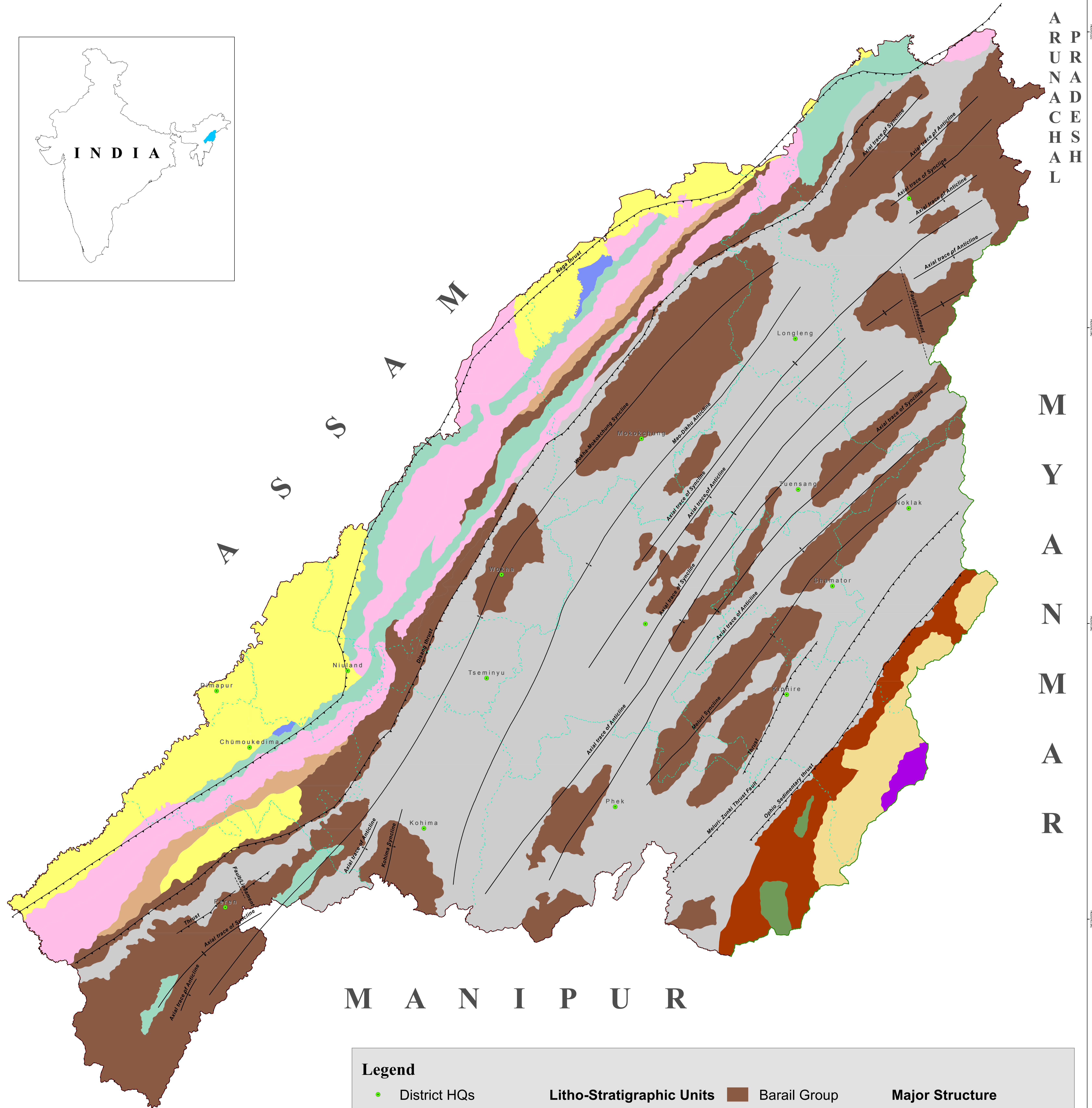
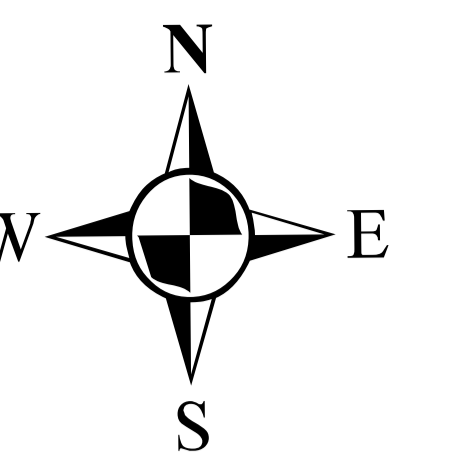


NAGALAND GEOLOGICAL MAP



M A N I P U R

A
R
P
U
N
A
D
E
S
H
A
L

M
Y
A
N
M
A
R

Legend							
	District HQs	Litho-Stratigraphic Units		Barail Group	Major Structure		
	District boundary		Quaternary Group		Disang Group		Thrust
	State Boundary		Dihing Group		Pokphur Formation		Fault/Lineament
	International Boundary		Dupitila Group		Naga Ophiolites		Axial trace of Anticline
			Tipam Group		Nimi Formation		Axial trace of Syncline
			Surma Group		Naga Metamorphics		



Dataset: NGISRSC base layers (2022), Geological map (GSI,2011)
Coordinate System: WGS 1984 UTM Zone 46N

Prepared by: Nagaland GIS & Remote Sensing Centre
Planning & Co-ordination Department, Govt. of Nagaland

"This map is without prejudice to the claims of Nagaland for re-drawing the Assam-Nagaland boundary on the basis of historical and traditional factor"
"The boundaries of Nagaland as shown on this map are subject to revision as provided in the 1960 Delhi Agreement"

93°30'E 94°00'E 94°30'E 95°00'E