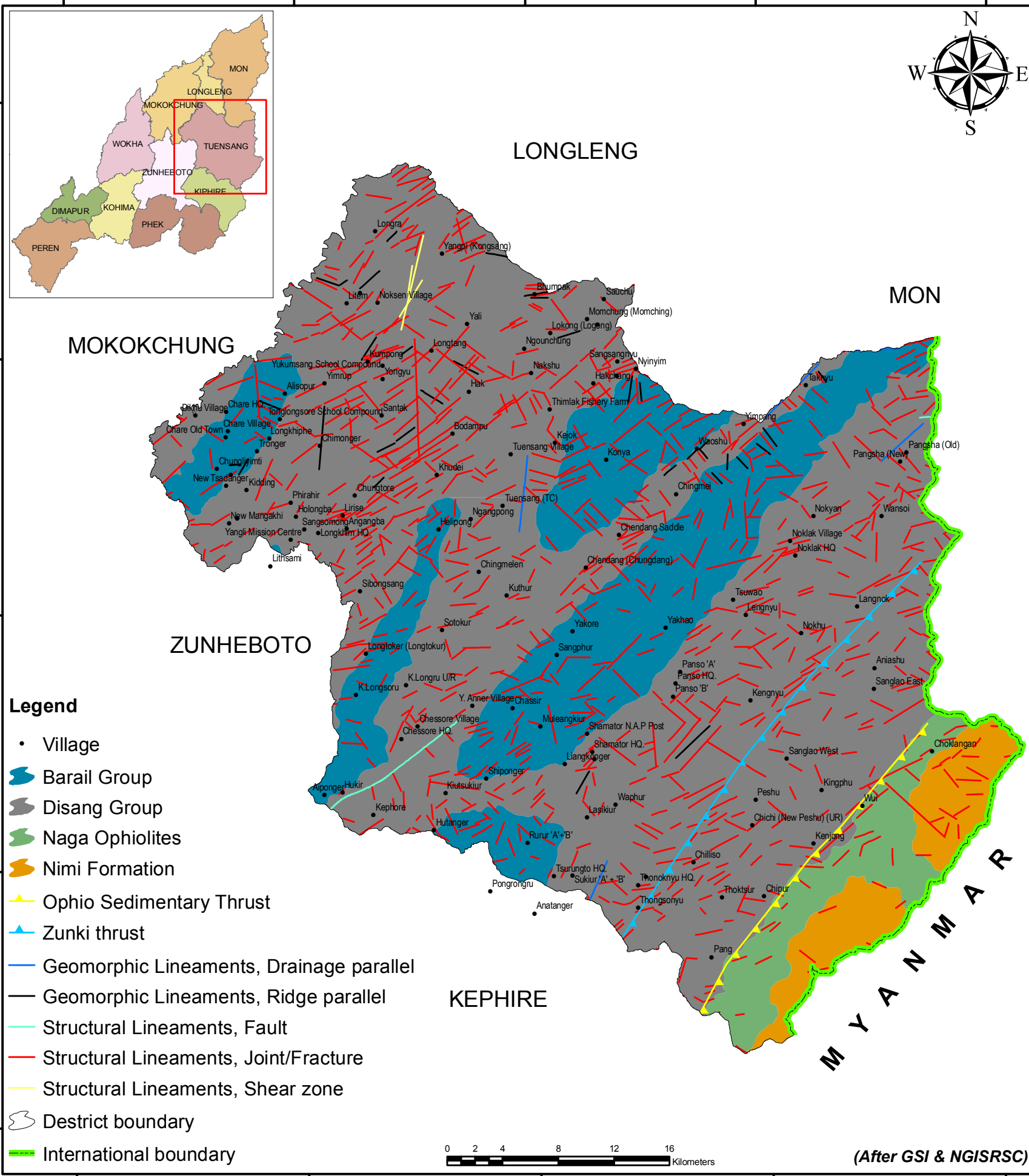
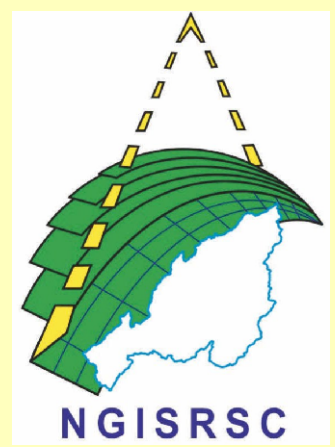


# GEOLOGY TUENSANG DISTRICT NAGALAND



- Legend**
- Village
  - Barail Group
  - Disang Group
  - Naga Ophiolites
  - Nimi Formation
  - Ophio Sedimentary Thrust
  - Zunki thrust
  - Geomorphic Lineaments, Drainage parallel
  - Geomorphic Lineaments, Ridge parallel
  - Structural Lineaments, Fault
  - Structural Lineaments, Joint/Fracture
  - Structural Lineaments, Shear zone
  - District boundary
  - International boundary



PREPARED BY  
Nagaland GIS and Remote Sensing Centre  
Planning & Co-ordination Department  
Government of Nagaland

"The boundaries of Nagaland as shown on this map are subject to revision as provided in the 1960 Delhi Agreement"