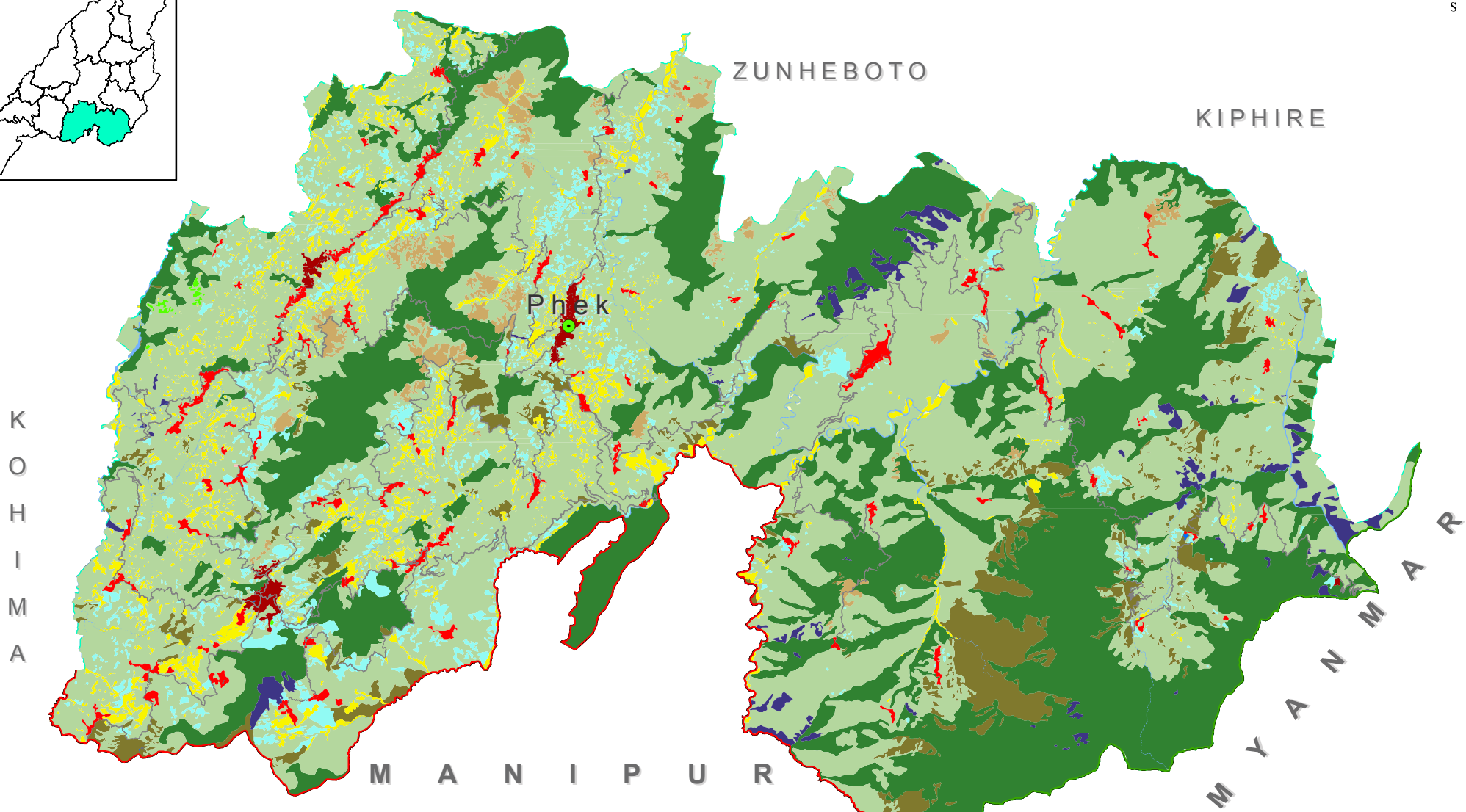
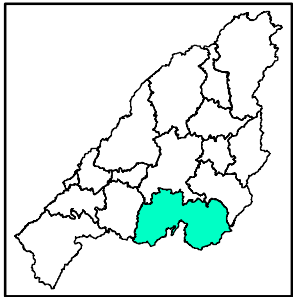
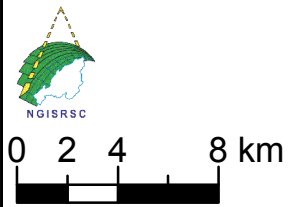


# LANDUSE LANDCOVER MAP PHEK DISTRICT, NAGALAND



## Legend

- |                        |                                     |                                        |                                   |                            |
|------------------------|-------------------------------------|----------------------------------------|-----------------------------------|----------------------------|
| District HQs           | <b>LULC: Class, Sub-Class</b>       | Agricultural Land, Terrace Cultivation | Build-up, Transportation-Road     | Wasteland, Sandy Area      |
| District boundary      | Agricultural Land, Jhum Cultivation | Build-up, Settlement-Other             | Forestland, Forest Dense          | Wasteland, Scrubland       |
| State Boundary         | Agricultural Land, Mixed Farming    | Build-up, Settlement-Rural             | Forestland, Forest Open           | Water Bodies, Lakes/Ponds  |
| International Boundary | Agricultural Land, Plantation       | Build-up, Settlement-Urban             | Wasteland, Gullied/Ravenous/Rocky | Water Bodies, River/Stream |



Dataset: NGISRSC base layers (2022), LISS-IV-2019,  
Coordinate System: WGS 1984 UTM Zone 46N

Prepared by: Nagaland GIS & Remote Sensing Centre  
Planning & Co-ordination Department, Govt. of Nagaland

94°16'0"E

94°36'10"E

94°56'20"E

"The boundaries of Nagaland as shown on this map are subject to revision as provided in the 1960 Delhi Agreement"

25°37'20"N