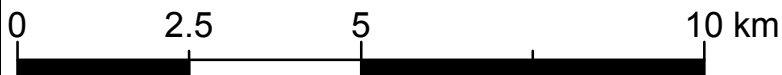
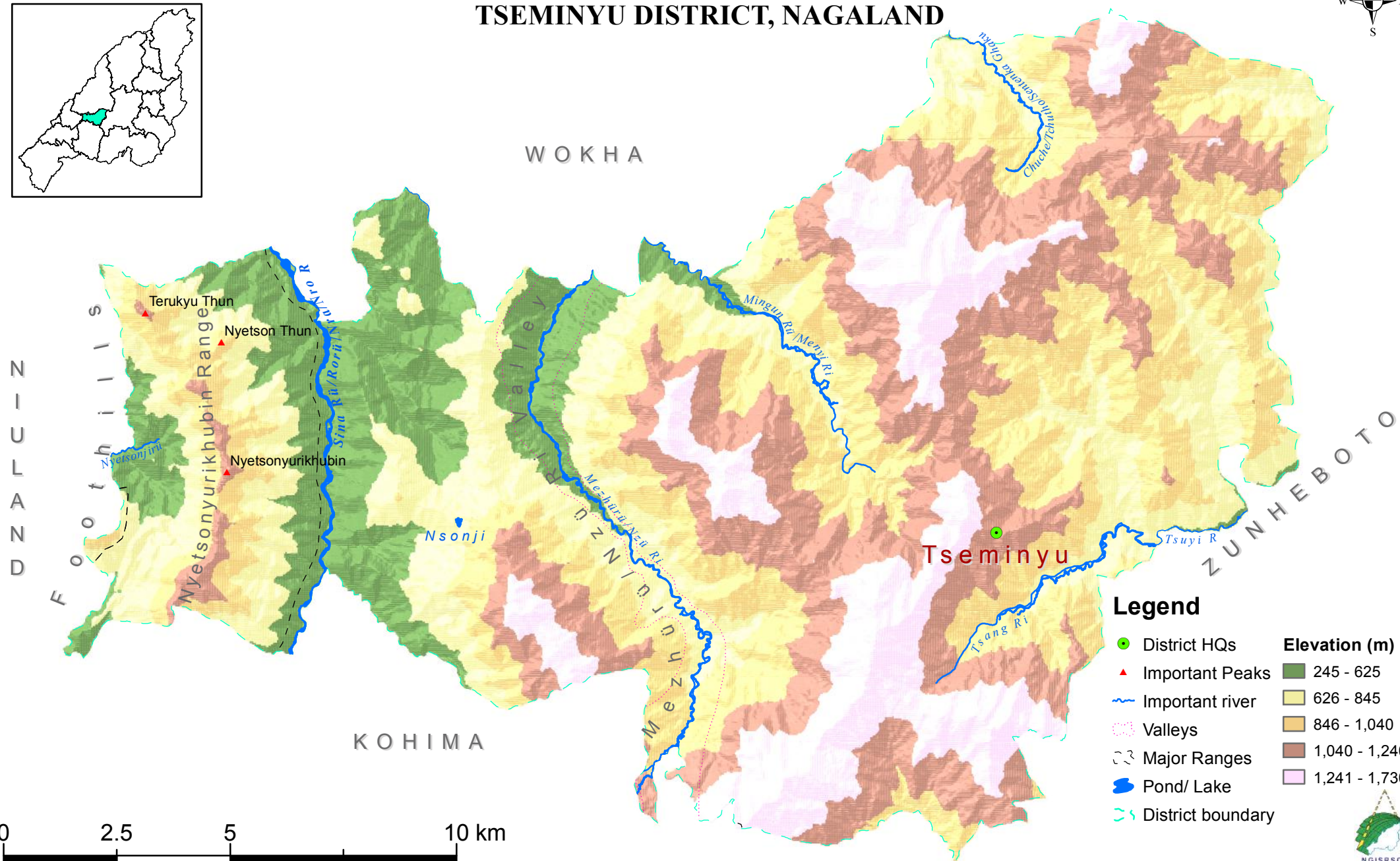
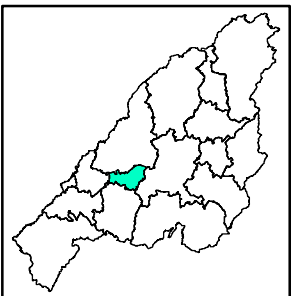


# PHYSICAL MAP TSEMINYU DISTRICT, NAGALAND



Dataset: NGISRSC geospatial base layers (2022), Village Resource Mapping, SRTM (DEM).  
Coordinate System: WGS 1984 UTM Zone 46N

Prepared by: Nagaland GIS & Remote Sensing Centre  
Planning & Co-ordination Department, Govt. of Nagaland

94°5'0"E

94°10'0"E

94°15'0"E

26°0'0"N

25°55'0"N

