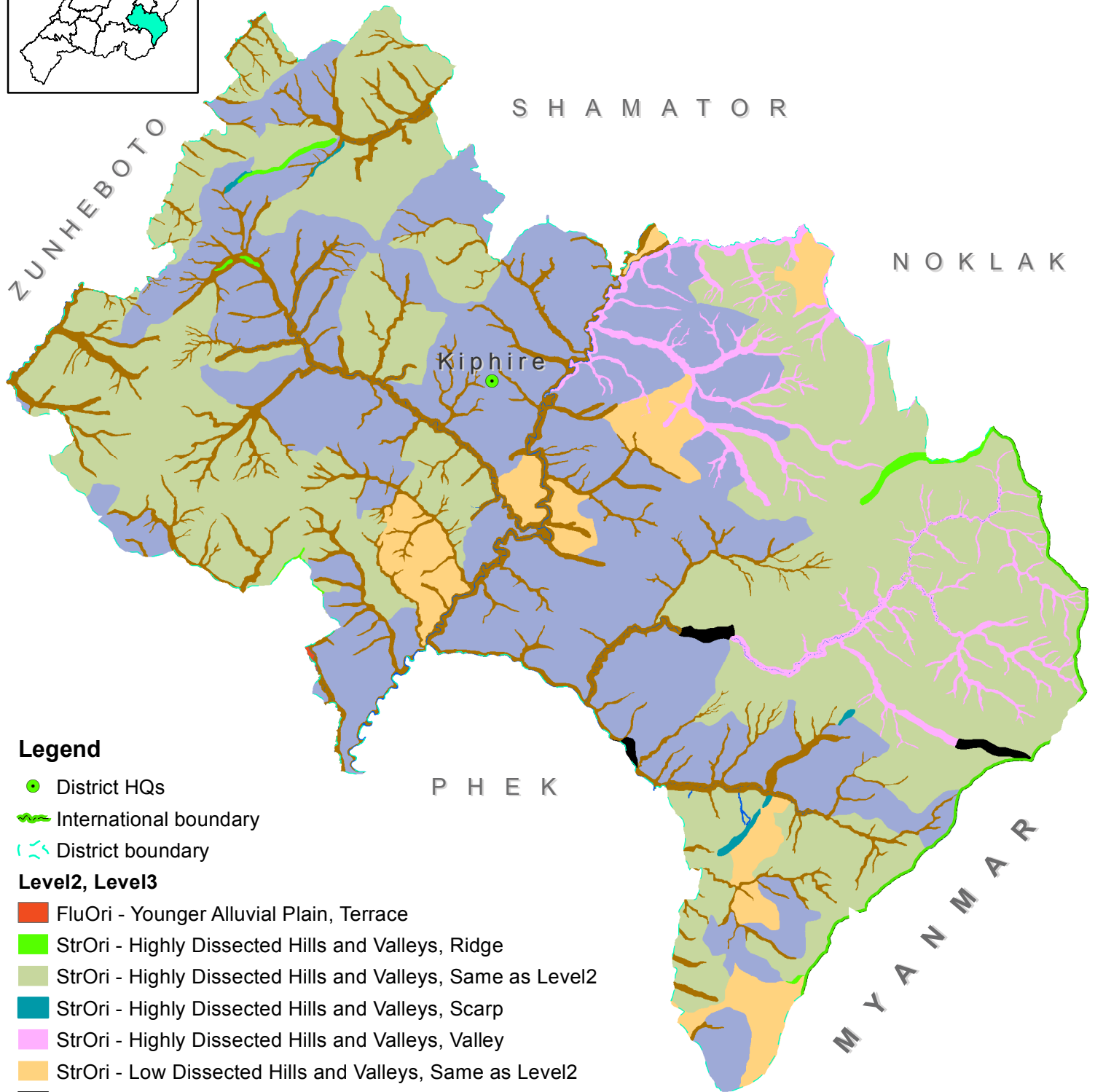
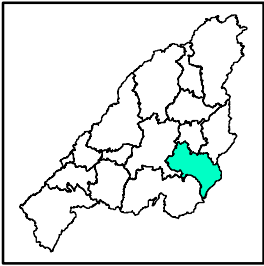


# GEOMORPHOLOGY MAP KIPHIRE DISTRICT, NAGALAND

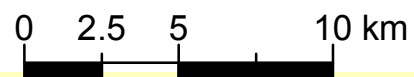


## Legend

- District HQs
- International boundary
- District boundary

### Level2, Level3

- FluOri - Younger Alluvial Plain, Terrace
- StrOri - Highly Dissected Hills and Valleys, Ridge
- StrOri - Highly Dissected Hills and Valleys, Same as Level2
- StrOri - Highly Dissected Hills and Valleys, Scarp
- StrOri - Highly Dissected Hills and Valleys, Valley
- StrOri - Low Dissected Hills and Valleys, Same as Level2
- StrOri - Moderately Dissected Hills and Valleys, Gorge
- StrOri - Moderately Dissected Hills and Valleys, Ridge
- StrOri - Moderately Dissected Hills and Valleys, Same as Level2
- StrOri - Moderately Dissected Hills and Valleys, Scarp
- StrOri - Moderately Dissected Hills and Valleys, Valley
- WaterBodies - River, Same as Level2



Dataset: NGISRSC base layers (2022), LISS-III-2006  
National Geomorphology & Lineament Mapping-1:50K  
Coordinate System: WGS 1984 UTM Zone 46N

Prepared by: Nagaland GIS & Remote Sensing Centre  
Planning & Co-ordination Department, Govt. of Nagaland

94°45'0"E 95°0'0"E  
"The boundaries of Nagaland as shown on this map are subject to revision as provided in the 1960 Delhi Agreement"

26°0'0"N

25°45'0"N

25°30'0"N