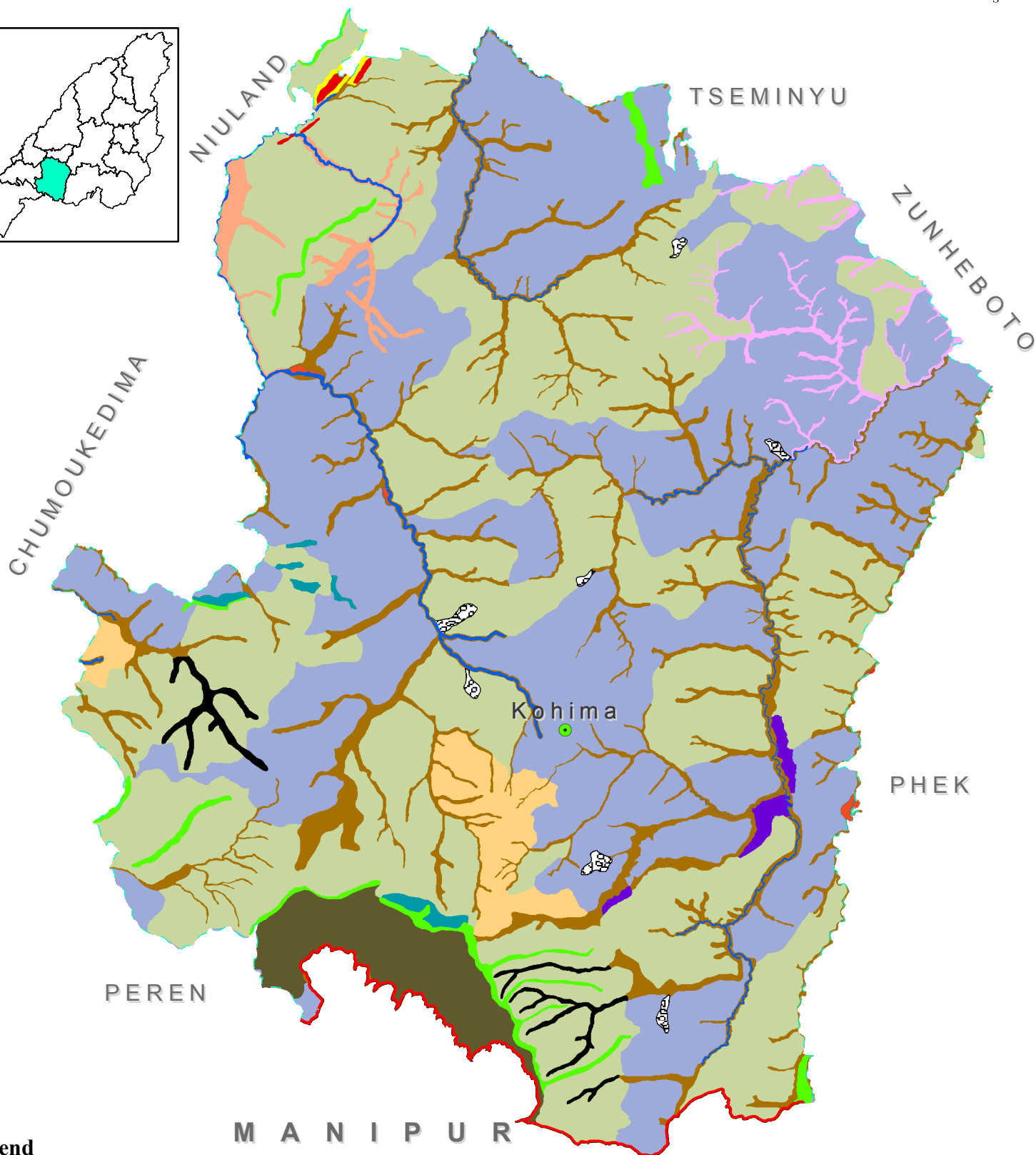
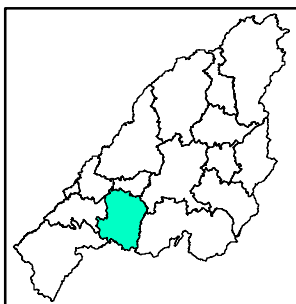


# GEOMORPHOLOGY MAP KOHIMA DISTRICT, NAGALAND



## Legend

- District HQs
- State boundary
- District boundary
- Level2, Level3**
- DenOri - Highly Dissected Hills and Valleys, Same as Level2
- DenOri - Mass Wasting Products, Landslide
- FluOri - Younger Alluvial Plain, Gilled Tract
- FluOri - Younger Alluvial Plain, Terrace
- StrOri - Highly Dissected Hills and Valleys, Ridge
- StrOri - Highly Dissected Hills and Valleys, Same as Level2
- StrOri - Highly Dissected Hills and Valleys, Scarp
- StrOri - Highly Dissected Hills and Valleys, Valley
- StrOri - Low Dissected Hills and Valleys, Same as Level2
- StrOri - Low Dissected Hills and Valleys, Scarp
- StrOri - Low Dissected Hills and Valleys, Strike Ridge
- StrOri - Low Dissected Hills and Valleys, Valley
- StrOri - Moderately Dissected Hills and Valleys, Gorge
- StrOri - Moderately Dissected Hills and Valleys, Ridge
- StrOri - Moderately Dissected Hills and Valleys, Same as Level2
- StrOri - Moderately Dissected Hills and Valleys, Strath Terrace
- StrOri - Moderately Dissected Hills and Valleys, Strike Ridge
- StrOri - Moderately Dissected Hills and Valleys, Strike Valley
- StrOri - Moderately Dissected Hills and Valleys, Valley
- WaterBodies - River, Same as Level2

0 2.5 5 10 km



Dataset: NGISRSC base layers (2022), LISS-III-2006  
National Geomorphology & Lineament Mapping-1:50K  
Coordinate System: WGS 1984 UTM Zone 46N

Prepared by: Nagaland GIS & Remote Sensing Centre  
Planning & Co-ordination Department, Govt. of Nagaland

94°0'0"E

94°10'0"E

"The boundaries of Nagaland as shown on this map are subject to revision as provided in the 1960 Delhi Agreement"