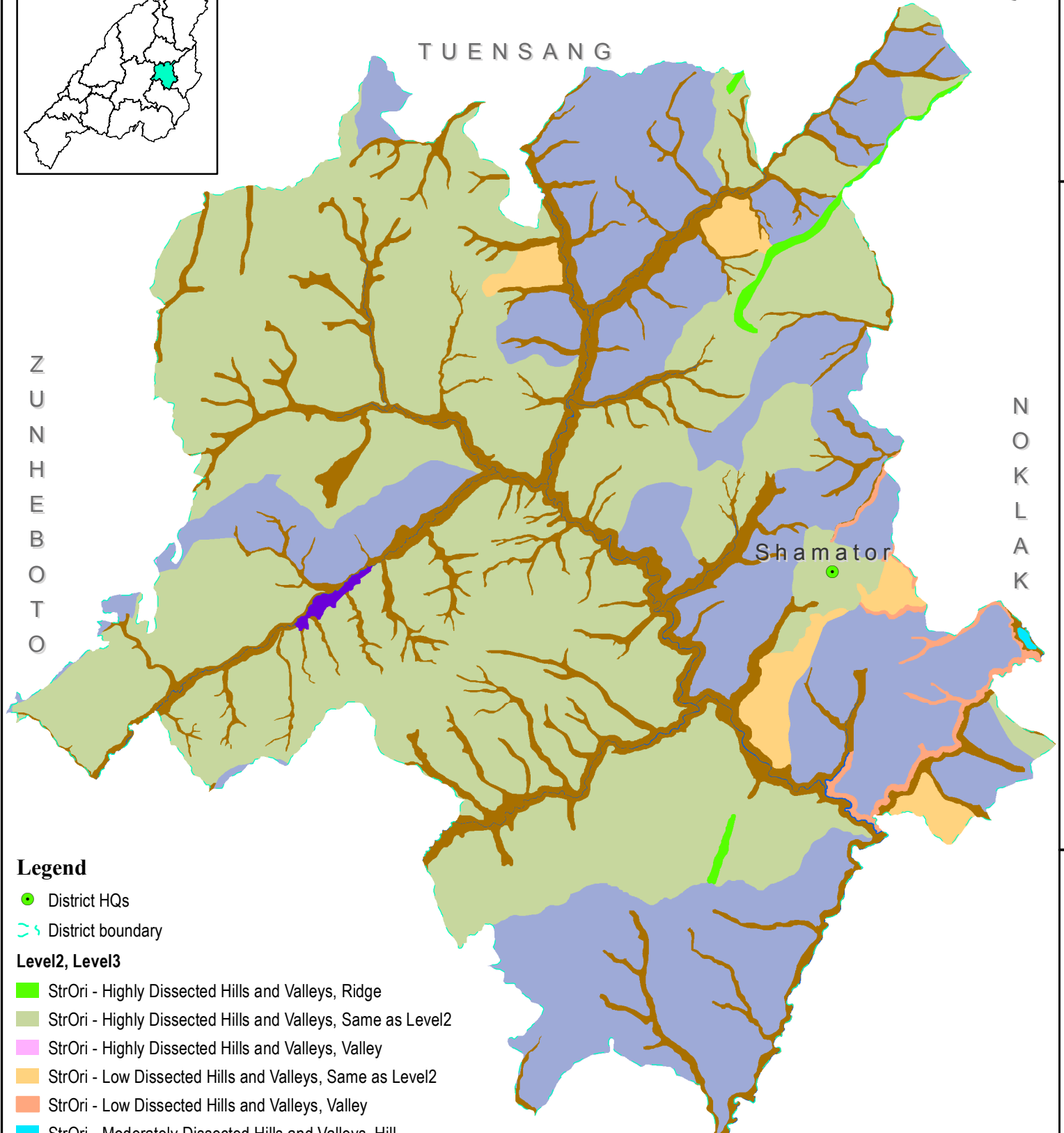
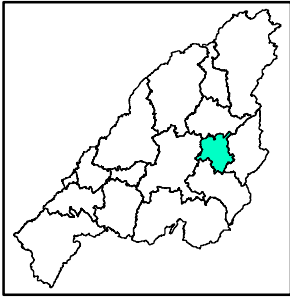


GEOMORPHOLOGY MAP SHAMATOR DISTRICT, NAGALAND



Legend

- District HQs
- - - District boundary

Level2, Level3

- StrOri - Highly Dissected Hills and Valleys, Ridge
- StrOri - Highly Dissected Hills and Valleys, Same as Level2
- StrOri - Highly Dissected Hills and Valleys, Valley
- StrOri - Low Dissected Hills and Valleys, Same as Level2
- StrOri - Low Dissected Hills and Valleys, Valley
- StrOri - Moderately Dissected Hills and Valleys, Hill
- StrOri - Moderately Dissected Hills and Valleys, Ridge
- StrOri - Moderately Dissected Hills and Valleys, Same as Level2
- StrOri - Moderately Dissected Hills and Valleys, Strath Terrace
- StrOri - Moderately Dissected Hills and Valleys, Valley
- WaterBodies - River, Same as Level2



Dataset: NGISRSC base layers (2022), LISS-III-2006
National Geomorphology & Lineament Mapping-1:50K
Coordinate System: WGS 1984 UTM Zone 46N

Prepared by: Nagaland GIS & Remote Sensing Centre
Planning & Co-ordination Department, Govt. of Nagaland

94°40'0"E

94°50'0"E

26°10'0"N

26°0'0"N

