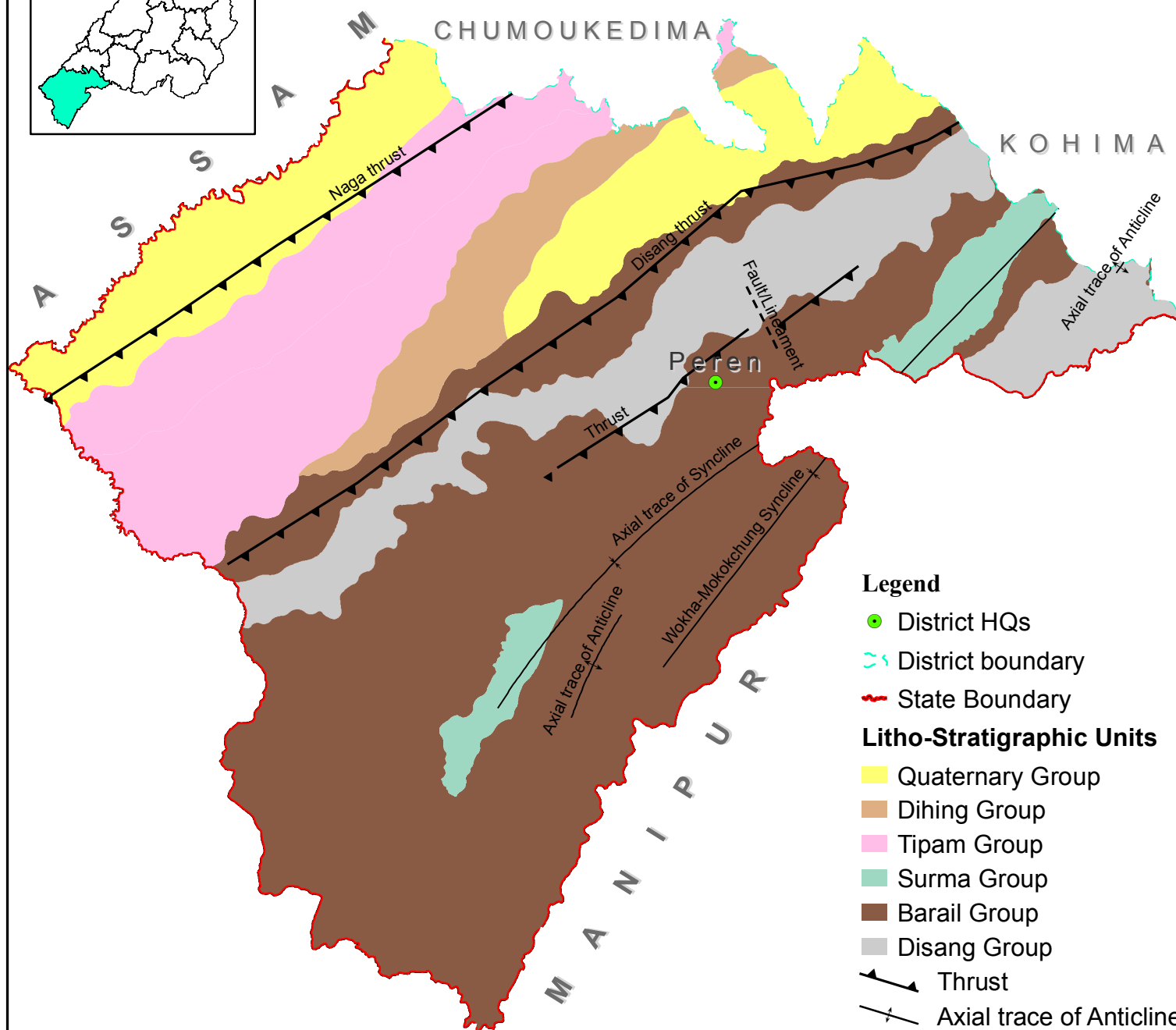
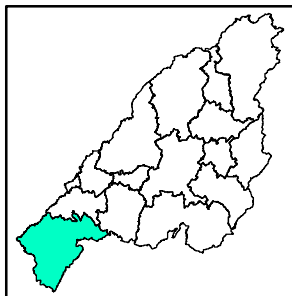
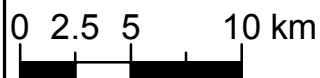


GEOLOGICAL MAP PEREN DISTRICT, NAGALAND



Legend

- District HQs
 - District boundary
 - State Boundary
- ### Litho-Stratigraphic Units
- Quaternary Group
 - Dihing Group
 - Tipam Group
 - Surma Group
 - Barail Group
 - Disang Group
- Thrust
 - Axial trace of Anticline
 - Axial trace of Syncline
 - Fault/Lineament



Dataset: NGISRSC base layers (2022), Geological map (GSI,2011)
Coordinate System: WGS 1984 UTM Zone 46N

Prepared by: Nagaland GIS & Remote Sensing Centre
Planning & Co-ordination Department, Govt. of Nagaland

93°35'40"E

93°55'50"E

"The boundaries of Nagaland as shown on this map are subject to revision as provided in the 1960 Delhi Agreement"

"This map is without prejudice to the claims of Nagaland for re-drawing the Assam-Nagaland boundary on the basis of historical and traditional factor"

25°37'20"N

25°17'10"N

