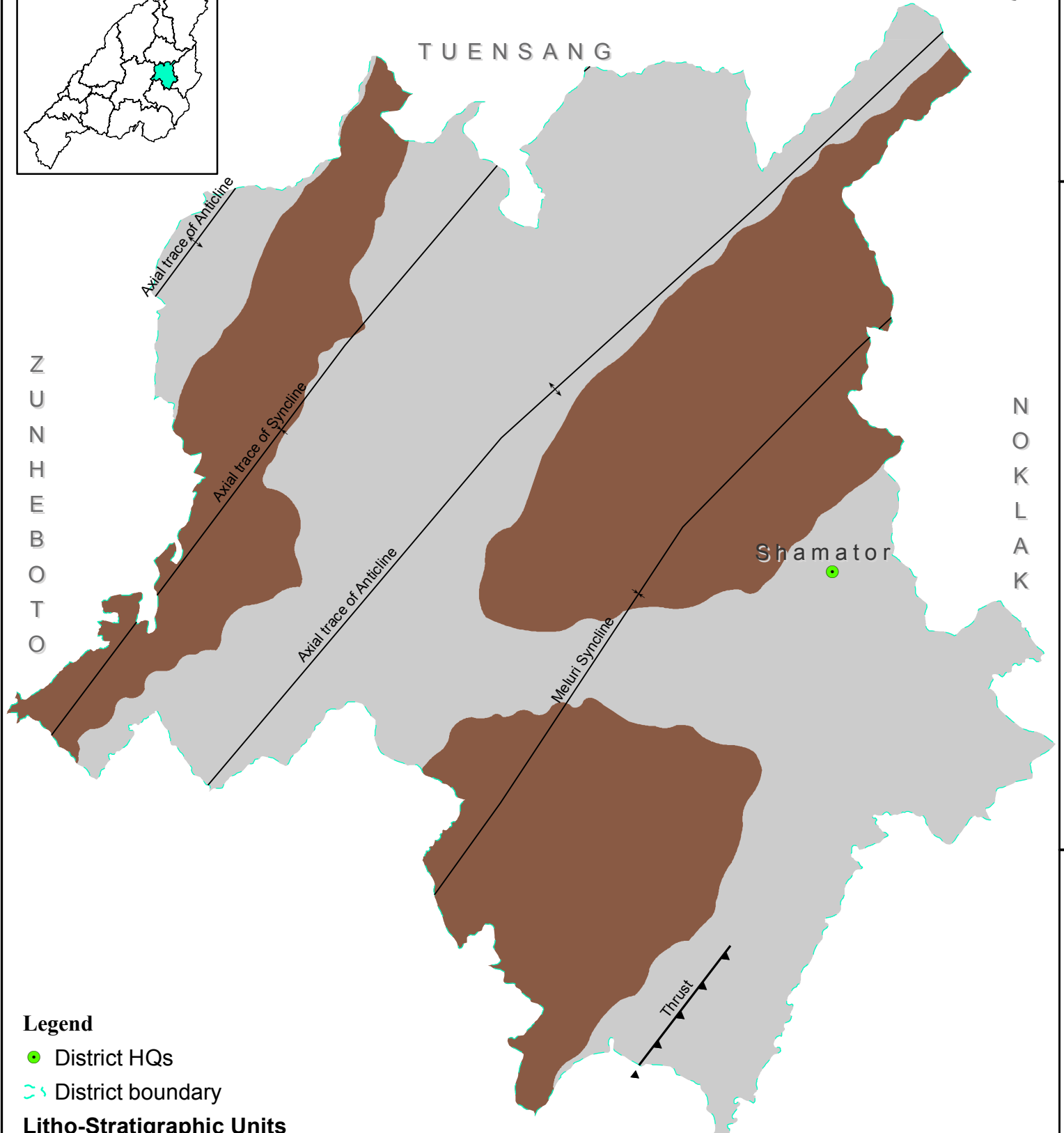
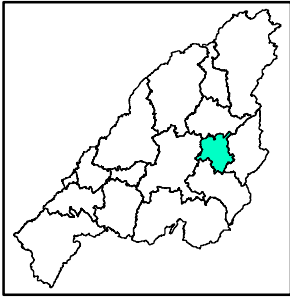


GEOLOGICAL MAP SHAMATOR DISTRICT, NAGALAND



Legend

- District HQs
- District boundary

Litho-Stratigraphic Units

- Barail Group
- Disang Group
- Thrust
- Axial trace of Anticline
- Axial trace of Syncline



Dataset: NGISRSC base layers (2022), Geological map (GSI,2011)
Coordinate System: WGS 1984 UTM Zone 46N

Prepared by: Nagaland GIS & Remote Sensing Centre
Planning & Co-ordination Department, Govt. of Nagaland