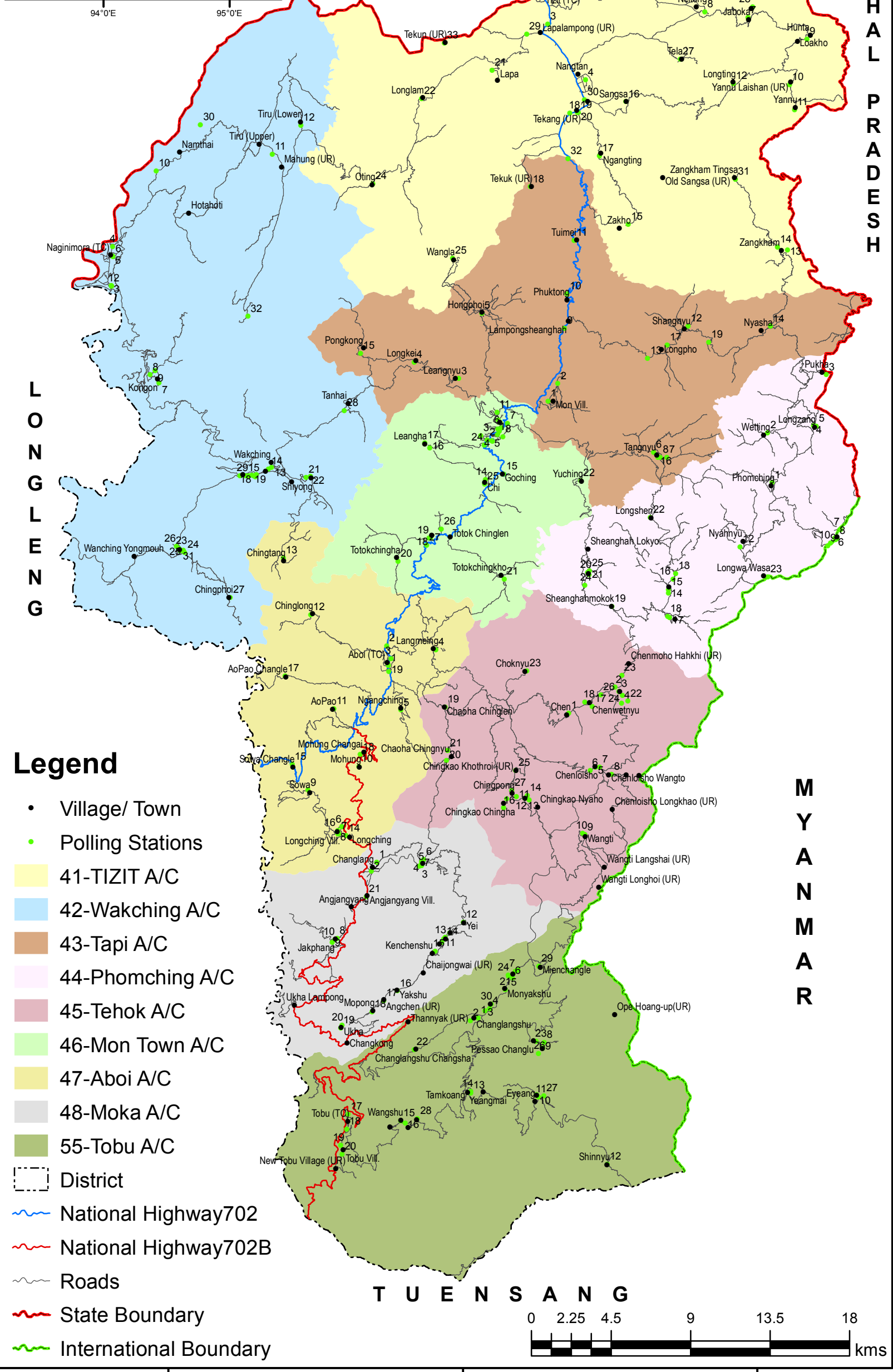


ELECTION GIS

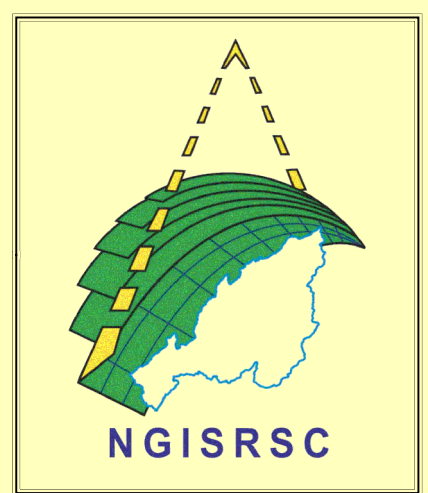
MON DISTRICT

NAGALAND



Legend

- Village/ Town
- Polling Stations
- 41-TIZIT A/C
- 42-Wakching A/C
- 43-Tapi A/C
- 44-Phomching A/C
- 45-Tehok A/C
- 46-Mon Town A/C
- 47-Aboi A/C
- 48-Moka A/C
- 55-Tobu A/C
- District
- National Highway702
- National Highway702B
- Roads
- State Boundary
- International Boundary



PREPARED BY
 Nagaland GIS and Remote Sensing Centre
 Planning & Co-ordination Department
 Government of Nagaland (2018)

"The boundaries of Nagaland as shown on this map are subject to revision as provided in the 1960 Delhi Agreement"
 "This map is without prejudice to the claims of Nagaland for re-drawing the Assam-Nagaland boundary on the basis of historical and traditional factor"