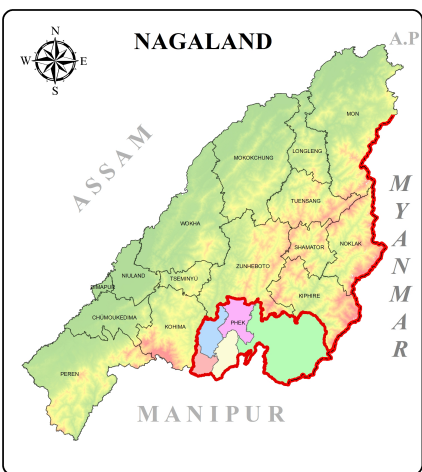
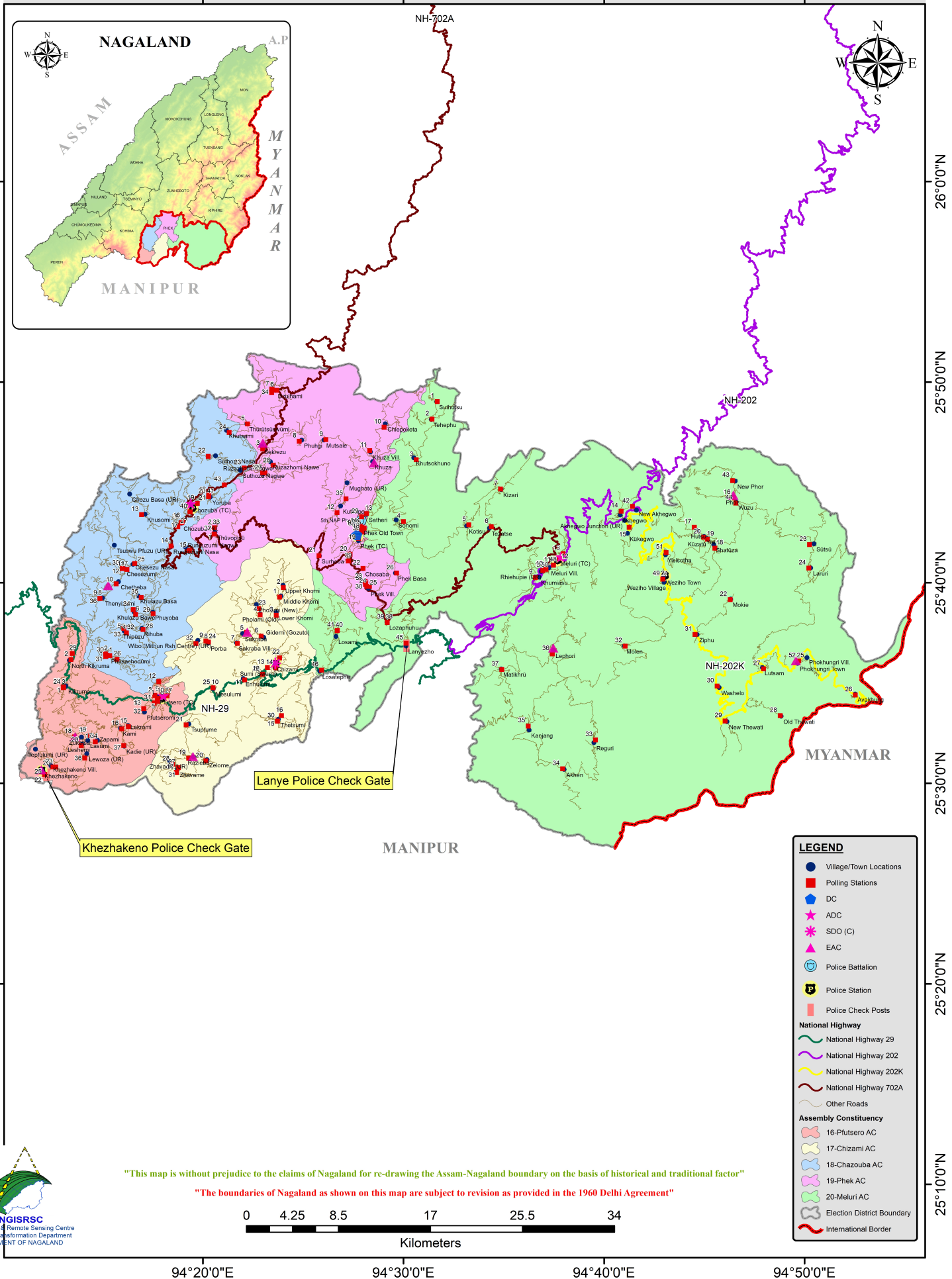


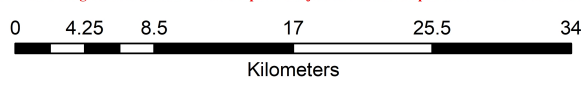
PHEK ELECTION DISTRICT MAP



LEGEND	
●	Village/Town Locations
■	Polling Stations
◆	DC
★	ADC
☆	SDO (C)
▲	EAC
⬢	Police Battalion
⬢	Police Station
■	Police Check Posts
National Highway	
—	National Highway 29
—	National Highway 202
—	National Highway 202K
—	National Highway 702A
—	Other Roads
Assembly Constituency	
⬢	16-Pfutsero AC
⬢	17-Chizami AC
⬢	18-Chazouba AC
⬢	19-Phek AC
⬢	20-Meluri AC
⬢	Election District Boundary
—	International Border

"This map is without prejudice to the claims of Nagaland for re-drawing the Assam-Nagaland boundary on the basis of historical and traditional factor"

"The boundaries of Nagaland as shown on this map are subject to revision as provided in the 1960 Delhi Agreement"



94°20'0"E 94°30'0"E 94°40'0"E 94°50'0"E